

À des fins de recherche uniquement

Anticorps Polyclonal de lapin anti-WFS1



Numéro de catalogue: **CL594-26995** **Phare**

Informations de base

Numéro de catalogue: CL594-26995	Numéro d'acquisition GenBank: BC030130	Méthode de purification: Purification par affinité contre l'antigène
Taille: 100ul, Concentration: 1000 µg/ml by Nanodrop;	Identification du gène (NCBI): 7466	Dilutions recommandées: IF 1:50-1:500
Hôte: Lapin	Nom complet: Wolfram syndrome 1 (wolframin)	Excitation/Emission maxima wavelengths: 594 nm / 615 nm
Isotype: IgG	MW calculé 890 aa, 100 kDa	
Immunogen Catalog Number: AG25724		

Applications

Applications testées: IF	Contrôles positifs: IF : tissu cérébral de rat, tissu cérébral de souris
Spécificité de l'espèce: Humain, rat, souris	

Informations générales

Wolfram syndrome protein (WFS1), also called wolframin, is a transmembrane protein, which is located primarily in the endoplasmic reticulum and its expression is induced in response to ER stress, partially through transcriptional activation. ER localization suggests that WFS1 protein has physiological functions in membrane trafficking, secretion, processing and/or regulation of ER calcium homeostasis. It is ubiquitously expressed with highest levels in brain, pancreas, heart, and insulinoma beta-cell lines. Mutations of the WFS1 gene are responsible for two hereditary diseases, autosomal recessive Wolfram syndrome and autosomal dominant low frequency sensorineural hearing loss.

Stockage

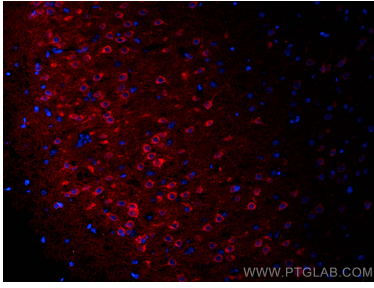
Stockage:
Stocker à -20 °C. Éviter toute exposition à la lumière. Stable pendant un an après l'expédition.
Tampon de stockage:
PBS avec glycérol à 50 %, Proclin300 à 0,05 % et BSA à 0,5 %, pH 7,3.
L'aliquotage n'est pas nécessaire pour le stockage à -20C

***** Les 20ul contiennent 0,1% de BSA.**

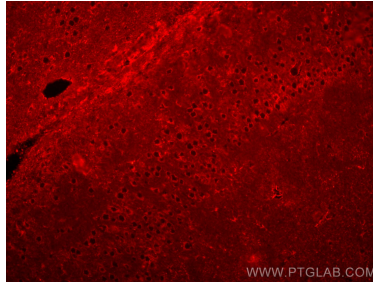
For technical support and original validation data for this product please contact:
T: 1 (888) 4PTGLAB (1-888-478-4522) (toll free in USA), or 1(312) 455-8498 (outside USA)
E: proteintech@ptglab.com
W: ptglab.com

This product is exclusively available under Proteintech Group brand and is not available to purchase from any other manufacturer.

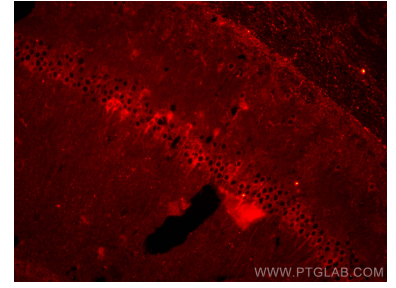
Données de validation sélectionnées



Immunofluorescent analysis of (4% PFA) fixed rat brain tissue using CoraLite® Plus 594 WFS1 antibody (CL594-26995) at dilution of 1:200.



Immunofluorescent analysis of (4% PFA) fixed mouse brain tissue using CoraLite® Plus 594 WFS1 antibody (CL594-26995) at dilution of 1:200.



Immunofluorescent analysis of (4% PFA) fixed mouse brain tissue using CoraLite® Plus 594 WFS1 antibody (CL594-26995) at dilution of 1:200.