

À des fins de recherche uniquement

Anticorps Polyclonal de lapin anti-GFP tag



Numéro de catalogue: **CL594-50430**

Informations de base

| | | |
|---|--|---|
| Numéro de catalogue: CL594-50430 | Numéro d'acquisition GenBank: U73901 | Méthode de purification: Purification par affinité contre l'antigène |
| Taille: 100ul , Concentration: 1000 µg/ml by Nanodrop; | Identification du gène (NCBI): Nom complet: | Dilutions recommandées: IF 1:50-1:500 |
| Hôte: Lapin | MW calculé 26 kDa | Excitation/Emission maxima wavelengths: 588 nm / 604 nm |
| Isotype: IgG | | |
| Immunogen Catalog Number: AG2128 | | |

Applications

| | |
|--|--|
| Applications testées: IF | Contrôles positifs: IF : cellules HEK-293 transfectées, |
| Spécificité de l'espèce: Protéine recombinante, Aequorea Victoria | |

Informations générales

Protein tags are protein or peptide sequences located either on the C- or N- terminal of the target protein, which facilitates one or several of the following characteristics: solubility, detection, purification, localization and expression. Green fluorescence protein(GFP) is a protein composed of 238 amino acid residues(26.9kDa) derived from the Jellyfish Aequorea victoria, which emits green light(emission peak at 509nm) when excited by blue light(excitation peak at 395nm). GFP has become an invaluable tool in cell biology research, since its intrinsic fluorescence can be visualized in living cells. EGFP contains the double-amino-acid substitutions Phe-64 to Leu and Ser-65 to Thr(previously published as GFPmut1; PMID: 8707053). In contrast to wtGFP, EGFP has a single, strong, red-shifted excitation peak at 488nm. GFPmut1 fluoresces 35-fold more intensely than wtGFP when excited at 488nm, due to an increase in its extinction coefficient(Em). This antibody is a rabbit polyclonal antibody raised against full-length eGFP and reactive against all variants of Aequorea victoria GFP such as S65T-GFP, RS-GFP, YFP, CFP and eGFP.

Stockage

Stockage:
Stocker à -20 °C. Éviter toute exposition à la lumière.
Tampon de stockage:
PBS avec glycérol à 50 %, Proclin300 à 0,05 % et BSA à 0,5 %, pH 7,3.
L'aliquotage n'est pas nécessaire pour le stockage à -20C

***** Les 20ul contiennent 0,1% de BSA.**

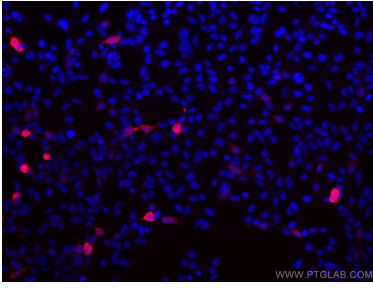
For technical support and original validation data for this product please contact:

T: 1 (888) 4PTGLAB (1-888-478-4522) (toll free in USA), or 1(312) 455-8498 (outside USA)

E: proteintech@ptglab.com
W: ptglab.com

This product is exclusively available under Proteintech Group brand and is not available to purchase from any other manufacturer.

Données de validation sélectionnées



Immunofluorescent analysis of (-20°C Ethanol) fixed Transfected HEK-293 cells using CoraLite®594 GFP tag antibody (CL594-50430) at dilution of 1:200.