

À des fins de recherche uniquement

Anticorps Monoclonal anti-Beta Actin



Numéro de catalogue: CL594-60008

Informations de base

Numéro de catalogue: CL594-60008	Numéro d'acquisition GenBank: BC002409	Méthode de purification: Précipitation de l'acide caprylique/du sulfate d'ammonium
Taille: 100ul , Concentration: 1000 µg/ml by 60 Nanodrop;	Identification du gène (NCBI): 60	CloneNo.: 7D2C10
Hôte: Mouse	Nom complet: actin, beta	Dilutions recommandées: WB 1:1000-1:4000 IF 1:200-1:1000
Isotype: IgM	MW calculé 375 aa, 42 kDa	Excitation/Emission maxima wavelengths: 588 nm / 604 nm
Immunogen Catalog Number: AG0297		

Applications

Applications testées: IF, WB	Contrôles positifs: WB : cellules HepG2, cellules HEK-293, cellules HeLa IF : cellules HeLa, cellules MDCK
Spécificité de l'espèce: Humain, plante, poisson-zèbre, rat, souris	

Informations générales

Beta actin, also named as ACTB and F-Actin, belongs to the actin family. Actins are highly conserved globular proteins that are involved in various types of cell motility and are ubiquitously expressed in all eukaryotic cells. At least six isoforms of actins are known in mammals and other vertebrates: alpha (ACTC1, cardiac muscle 1), alpha 1 (ACTA1, skeletal muscle) and 2 (ACTA2, aortic smooth muscle), beta (ACTB), gamma 1 (ACTG1) and 2 (ACTG2, enteric smooth muscle). Beta and gamma 1 are two non-muscle actin proteins. Most actins consist of 376aa, while ACTG2 (rich in muscles) has 375aa and ACTG1(found in non-muscle cells) has only 374aa. Beta actin has been widely used as the internal control in RT-PCR and Western Blotting as a 42-kDa protein. However, the 37-40 kDa cleaved fragment of beta actin can be generated during apoptosis process. This antibody is conjugated with CL594,Ex/Em 593 nm/614 nm.

Stockage

Stockage:
Stocker à -20 °C. Éviter toute exposition à la lumière. Stable pendant un an après l'expédition.
Tampon de stockage:
PBS avec glycérol à 50 %, Proclin300 à 0,05 % et BSA à 0,5 %, pH 7,3.
L'aliquotage n'est pas nécessaire pour le stockage à -20C

***** Les 20ul contiennent 0,1% de BSA.**

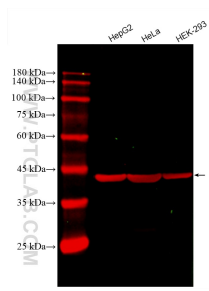
For technical support and original validation data for this product please contact:

T: 1 (888) 4PTGLAB (1-888-478-4522) (toll free in USA), or 1(312) 455-8498 (outside USA)

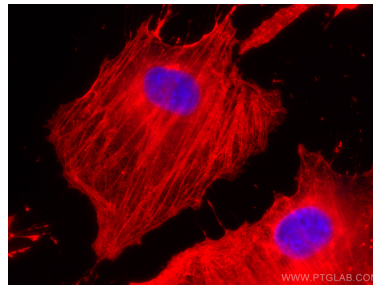
E: proteintech@ptglab.com
W: ptglab.com

This product is exclusively available under Proteintech Group brand and is not available to purchase from any other manufacturer.

Données de validation sélectionnées



Various lysates were subjected to SDS PAGE followed by western blot with CL594-60008 (Beta Actin antibody) at dilution of 1:2000 incubated at room temperature for 1.5 hours.



Immunofluorescent analysis of (-20°C Methanol) fixed HeLa cells using CoraLite®594 Beta Actin antibody (CL594-60008, Clone: 7D2C10) at dilution of 1:200.