

À des fins de recherche uniquement

Anticorps Monoclonal anti-B23/NPM1



Numéro de catalogue: CL594-60096

Phare

Informations de base

Numéro de catalogue:
CL594-60096

Taille:
100ul , Concentration: 500 µg/ml by
Bradford method using BSA as the
standard;

Hôte:
Mouse

Isotype:
IgG1

Immunogen Catalog Number:
AG7415

Numéro d'acquisition GenBank:
BC002398

Identification du gène (NCBI):
4869

Nom complet:
nucleophosmin (nucleolar
phosphoprotein B23, numatrin)

MW calculé
33 kDa

Méthode de purification:
Purification par protéine G

CloneNo.:
4F12A3

Dilutions recommandées:
IF 1:50-1:500

Excitation/Emission maxima
wavelengths:
588 nm / 604 nm

Applications

Applications testées:
IF

Spécificité de l'espèce:
Humain, rat, souris

Contrôles positifs:

IF : cellules HepG2,

Informations générales

Nucleophosmin (NPM1,B23) is a putative ribosome assembly factor with a high affinity for peptides containing nuclear localization signals (NLSs). The transport of proteins across the nuclear envelope is a selective, multistep process involving several cytoplasmic factors. Proteins must be recognized as import substrates, dock at the nuclear pore complex and translocate across the nuclear envelope in an ATP-dependent fashion. Several cytosolic and nuclear proteins that are central to this process have been identified. The 38 kDa nuclear protein nucleophosmin is involved in ribosomal assembly and rRNA transport. It is an abundant protein that is highly phosphorylated by Cdc2 kinase during mitosis.

Stockage

Stockage:

Stocker à -20°C. Éviter toute exposition à la lumière. Stable pendant un an après l'expédition.

Tampon de stockage:

PBS avec glycérol à 50 %, Proclin300 à 0,05 % et BSA à 0,5 %, pH 7,3.

L'aliquotage n'est pas nécessaire pour le stockage à -20C

*** Les 20ul contiennent 0,1% de BSA.

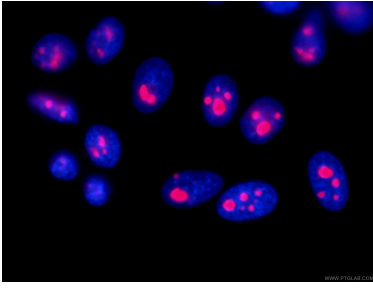
For technical support and original validation data for this product please contact:

T: 1 (888) 4PTGLAB (1-888-478-4522) (toll free
in USA), or 1(312) 455-8498 (outside USA)

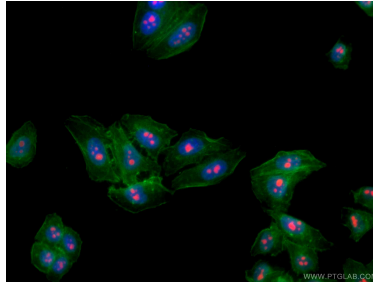
E: proteintech@ptglab.com
W: ptglab.com

This product is exclusively available under Proteintech Group brand and is not available to purchase from any other manufacturer.

Données de validation sélectionnées



Immunofluorescent analysis of (4% PFA) fixed HepG2 cells using CL594-60096 (B23/NPM1 antibody) at dilution of 1:100.



Immunofluorescent analysis of (4% PFA) fixed HepG2 cells using the CoraLite®594-conjugated version of this antibody, CL594-60096 (B23/NPM1 antibody), at dilution of 1:100. F-actin is stained using CL488-phalloidin (Green) and DNA is stained by DAPI (blue).