

À des fins de recherche uniquement

Anticorps Monoclonal anti-LCK

Numéro de catalogue: CL594-60162



Informations de base

Numéro de catalogue: CL594-60162	Numéro d'acquisition GenBank: BC013200	Méthode de purification: Purification par protéine G
Taille: 100ul , Concentration: 1000 µg/ml by Nanodrop;	Identification du gène (NCBI): 3932	CloneNo.: 2D10C2
Hôte: Mouse	Nom complet: Lymphocyte-specific protein tyrosine kinase	Excitation/Emission maxima wavelengths: 588 nm / 604 nm
Isotype: IgG1	MW calculé 539 aa, 56 kDa	
Immunogen Catalog Number: AG7694	MW observés: 50-60 kDa	

Applications

Applications testées:
FC (Intra)
Spécificité de l'espèce:
Humain, porc, rat

Informations générales

LCK(Lymphocyte cell-specific protein-tyrosine kinase) is also named as LSK,p56-LCK and a nonreceptor protein-tyrosine kinase of the SRC oncogene family that is involved in transduction of T-cell receptor-mediated activation. It is implicated in the control of lymphocyte growth by virtue of its overexpression in some lymphoid malignancies and its transforming activity in heterologous systems(PMID:2784463). It has 3 isoforms produced by alternative splicing.

Stockage

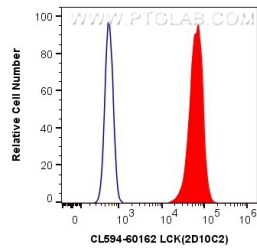
Stockage:
Stocker à -20 °C. Éviter toute exposition à la lumière. Stable pendant un an après l'expédition.
Tampon de stockage:
PBS avec glycérol à 50 %, Proclin300 à 0,05 % et BSA à 0,5 %, pH 7,3.
L'aliquotage n'est pas nécessaire pour le stockage à -20C

***** Les 20ul contiennent 0,1% de BSA.**

For technical support and original validation data for this product please contact:
T: 1 (888) 4PTGLAB (1-888-478-4522) (toll free in USA), or 1(312) 455-8498 (outside USA) E: proteintech@ptglab.com W: ptglab.com

This product is exclusively available under Proteintech Group brand and is not available to purchase from any other manufacturer.

Données de validation sélectionnées



1X10⁶ A431 cells were intracellularly stained with 0.8 ug CoraLite®594 Anti-Human LCK (CL594-60162, Clone:2D10C2) (red), or 0.8 ug CoraLite®594 Mouse IgG1 Isotype Control (MOPC-21) (CL594-65124, Clone: MOPC-21) (blue). Cells were fixed with 4% PFA and permeabilized with Flow Cytometry Perm Buffer (PF00011-C).