

À des fins de recherche uniquement

Anticorps Monoclonal anti-ALDH1A1

Numéro de catalogue: CL594-60171



Informations de base

Numéro de catalogue: CL594-60171	Numéro d'acquisition GenBank: BC001505	Méthode de purification: Purification par protéine G
Taille: 100ul , Concentration: 1000 µg/ml by Nanodrop;	Identification du gène (NCBI): 216	CloneNo.: 1A10A2
Hôte: Mouse	Nom complet: aldehyde dehydrogenase 1 family, member A1	Dilutions recommandées: IF 1:50-1:500
Isotype: IgG1	MW calculé 501 aa, 55 kDa	Excitation/Emission maxima wavelengths: 588 nm / 604 nm
Immunogen Catalog Number: AG8551		

Applications

Applications testées: IF	Contrôles positifs: IF : cellules HeLa,
Spécificité de l'espèce: Humain, porc, rat, souris	

Informations générales

ALDH1A1 (Aldehyde dehydrogenase family 1 member A1), also named as ALDC, ALDH1 and PUMB1, belongs to the aldehyde dehydrogenase family. The ALDH1A1 gene encodes a liver cytosolic isoform of acetaldehyde dehydrogenase, an enzyme involved in the major pathway of alcohol metabolism after alcohol dehydrogenase. ALDH1A1 plays a critical role in protection against oxidative stress-induced cytotoxicity in lens epithelial cells (PMID:19296407). And it is important for multiple biological activities including drug resistance, cell differentiation, and oxidative stress response (PMID:19025616). As a novel cancer stem cell marker, ALDH1A1 can be used for tumors whose corresponding normal tissues express ALDH1A1 in relatively restricted or limited levels such as breast, lung, ovarian or colon cancer (PMID: 20422001). This antibody is CL594(Ex/Em 593 nm/614 nm) conjugated.

Stockage

Stockage:
Stocker à -20 °C. Éviter toute exposition à la lumière. Stable pendant un an après l'expédition.
Tampon de stockage:
PBS avec glycérol à 50 %, Proclin300 à 0,05 % et BSA à 0,5 %, pH 7,3.
L'aliquotage n'est pas nécessaire pour le stockage à -20C

***** Les 20ul contiennent 0,1% de BSA.**

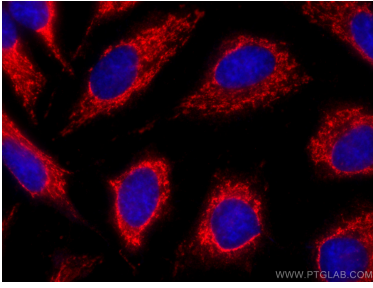
For technical support and original validation data for this product please contact:

T: 1 (888) 4PTGLAB (1-888-478-4522) (toll free
in USA), or 1(312) 455-8498 (outside USA)

E: proteintech@ptglab.com
W: ptglab.com

This product is exclusively available under Proteintech Group brand and is not available to purchase from any other manufacturer.

Données de validation sélectionnées



Immunofluorescent analysis of (-20°C Ethanol) fixed HeLa cells using CoraLite®594 ALDH1A1 antibody (CL594-60171, Clone: 1A10A2) at dilution of 1:100.