

À des fins de recherche uniquement

Anticorps Monoclonal anti-ACPP

Numéro de catalogue: CL594-60176



Informations de base

Numéro de catalogue: CL594-60176	Numéro d'acquisition GenBank: BC007460	Méthode de purification: Purification par protéine A
Taille: 100ul , Concentration: 1000 µg/ml by 55 Nanodrop;	Identification du gène (NCBI): 55	CloneNo.: 1G2C9
Hôte: Mouse	Nom complet: acid phosphatase, prostate	Dilutions recommandées: IF 1:50-1:500
Isotype: IgG2a	MW calculé 418 aa, 48 kDa	Excitation/Emission maxima wavelengths: 588 nm / 604 nm
Immunogen Catalog Number: AG8578	MW observés: 45-50 kDa	

Applications

Applications testées: IF	Contrôles positifs: IF : tissu de cancer de la prostate humain,
Spécificité de l'espèce: Humain, rat	

Informations générales

ACPP is also named as PAP(prostatic acid phosphatase),5'-nucleotidase,thiamine monophosphatas and Belongs to the histidine acid phosphatase family.This enzyme is a homodimeric glycoprotein with a subunit molecular mass of 50 kDa and is an androgen-stimulated secretory product of the human prostate gland(PMID:8132635).It is also a non-specific phosphatase and has been implicated in the progression of prostate cancer, which inactivates LPA in human seminal plasma(PMID:15280042). This protein has three glycosylation sites(PMID:10639192;12525165).

Stockage

Stockage:
Stocker à -20 °C. Éviter toute exposition à la lumière.
Tampon de stockage:
PBS avec glycérol à 50 %, Proclin300 à 0,05 % et BSA à 0,5 %, pH 7,3.
L'aliquotage n'est pas nécessaire pour le stockage à -20C

***** Les 20ul contiennent 0,1% de BSA.**

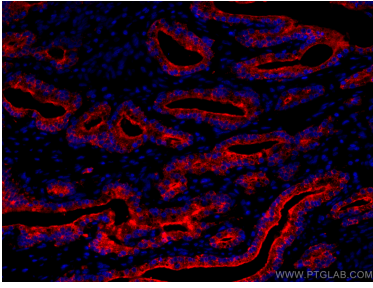
For technical support and original validation data for this product please contact:

T: 1 (888) 4PTGLAB (1-888-478-4522) (toll free
in USA), or 1(312) 455-8498 (outside USA)

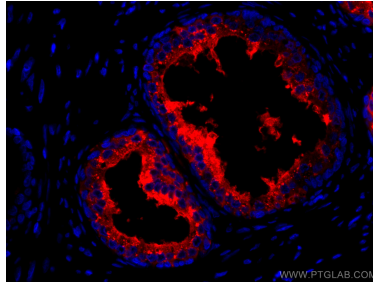
E: proteintech@ptglab.com
W: ptglab.com

This product is exclusively available under Proteintech Group brand and is not available to purchase from any other manufacturer.

Données de validation sélectionnées



Immunofluorescent analysis of (4% PFA) fixed human prostate cancer tissue using CoraLite®594 ACPP antibody (CL594-60176, Clone: 1G2C9) at dilution of 1:200.



Immunofluorescent analysis of (4% PFA) fixed human prostate cancer tissue using CoraLite®594 ACPP antibody (CL594-60176, Clone: 1G2C9) at dilution of 1:200.