

À des fins de recherche uniquement

Anticorps Monoclonal anti-NF-L

Numéro de catalogue: **CL594-60189**



Informations de base

Numéro de catalogue: CL594-60189	Numéro d'acquisition GenBank: BC039237	Méthode de purification: Purification par protéine G
Taille: 100ul , Concentration: 1000 µg/ml by Nanodrop;	Identification du gène (NCBI): 4747	CloneNo.: 5C12G4
Hôte: Mouse	Nom complet: neurofilament, light polypeptide	Dilutions recommandées: IF 1:50-1:500
Isotype: IgG1	MW calculé 543 aa, 62 kDa	Excitation/Emission maxima wavelengths: 588 nm / 604 nm
Immunogen Catalog Number: AG15178	MW observés: 65 kDa	

Applications

Applications testées: FC (Intra), IF	Contrôles positifs: IF : tissu cérébral de souris,
Spécificité de l'espèce: Humain, porc, rat, souris	

Informations générales

NEFL, also named as NF68 and NF-L, belongs to the intermediate filament family. Neurofilaments are the 10 nm intermediate filaments found specifically in neurons. They are a major component of the cell's cytoskeleton, and provide support for normal axonal radial growth. Neurofilaments usually contain three intermediate filament proteins: L, M, and H, which are involved in the maintenance of neuronal caliber. The names given to the three major neurofilament subunits are based upon the apparent molecular weight of the mammalian subunits on SDS-PAGE: NF-L, 65-68 kDa; NF-M, 145-160 kDa and NF-H, 200-220 kDa. This antibody is specific to NEFL.

Stockage

Stockage:
Stocker à -20 °C. Éviter toute exposition à la lumière. Stable pendant un an après l'expédition.
Tampon de stockage:
PBS avec glycérol à 50 %, Proclin300 à 0,05 % et BSA à 0,5 %, pH 7,3.
L'aliquotage n'est pas nécessaire pour le stockage à -20C

***** Les 20ul contiennent 0,1% de BSA.**

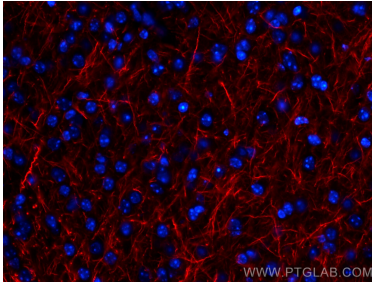
For technical support and original validation data for this product please contact:

T: 1 (888) 4PTGLAB (1-888-478-4522) (toll free
in USA), or 1(312) 455-8498 (outside USA)

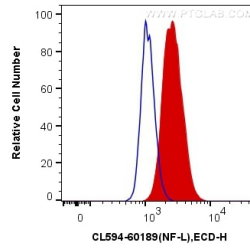
E: proteintech@ptglab.com
W: ptglab.com

This product is exclusively available under Proteintech Group brand and is not available to purchase from any other manufacturer.

Données de validation sélectionnées



Immunofluorescent analysis of (4% PFA) fixed mouse brain tissue using CoraLite®594 NF-L antibody (CL594-60189, Clone: 5C12G4) at dilution of 1:200.



1X10⁶ SH-SY5Y cells were intracellularly stained with 0.4 ug CoraLite®594 Anti-Human NF-L (CL594-60189, Clone:5C12G4) (red), or 0.4 ug Mouse IgG1 Isotype Control (CL594-66360, Clone: T1F8D3F10) (blue). Cells were fixed with 4% PFA and permeabilized with Flow Cytometry Perm Buffer (PF00011-C).