

À des fins de recherche uniquement

Anticorps Monoclonal anti-CD23

Numéro de catalogue: CL594-60208



Informations de base

Numéro de catalogue: CL594-60208	Numéro d'acquisition GenBank: BC064417	Méthode de purification: Purification par protéine A
Taille: 100ul , Concentration: 1000 µg/ml by Nanodrop;	Identification du gène (NCBI): 2208	CloneNo.: 4C7C9
Hôte: Mouse	Nom complet: Fc fragment of IgE, low affinity II, receptor for (CD23)	Dilutions recommandées: IF 1:50-1:500
Isotype: IgG2a	MW calculé 321 aa, 36 kDa	Excitation/Emission maxima wavelengths: 588 nm / 604 nm
Immunogen Catalog Number: AG0425		

Applications

Applications testées: IF	Contrôles positifs: IF : tissu d'amygdalite humain, tissu de lymphome humain
Spécificité de l'espèce: Humain	

Informations générales

CD23, also known as low affinity immunoglobulin epsilon Fc receptor, is a transmembrane glycoprotein present on a subpopulation of B lymphocytes in germinal centres, EBV-transformed B-lymphoblastoid cell lines, follicular dendritic cells, and a subpopulation of peripheral blood cells. CD23 has essential roles in the regulation of IgE production and in the differentiation of B-cells. And the antibody is conjugated with CL594, Ex/Em 593 nm/614 nm.

Stockage

Stockage:
Stocker à -20 °C. Éviter toute exposition à la lumière. Stable pendant un an après l'expédition.
Tampon de stockage:
PBS avec glycérol à 50 %, Proclin300 à 0,05 % et BSA à 0,5 %, pH 7,3.
L'aliquotage n'est pas nécessaire pour le stockage à -20C

*** Les 20ul contiennent 0,1% de BSA.

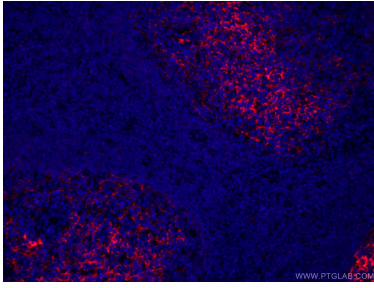
For technical support and original validation data for this product please contact:

T: 1 (888) 4PTGLAB (1-888-478-4522) (toll free
in USA), or 1(312) 455-8498 (outside USA)

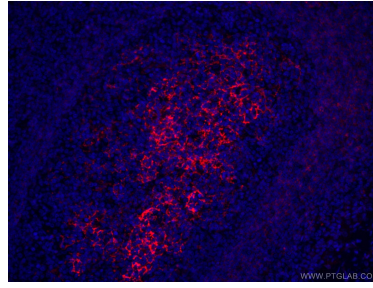
E: proteintech@ptglab.com
W: ptglab.com

This product is exclusively available under Proteintech Group brand and is not available to purchase from any other manufacturer.

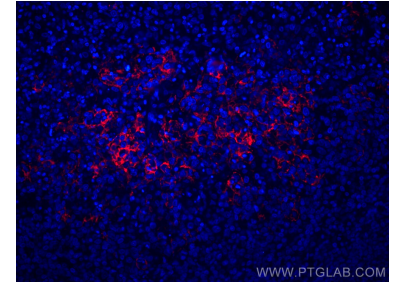
Données de validation sélectionnées



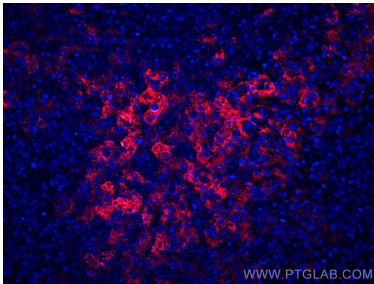
Immunofluorescent analysis of (4% PFA) fixed human tonsillitis tissue using CL594-60208 (CD23 antibody) at dilution of 1:50.



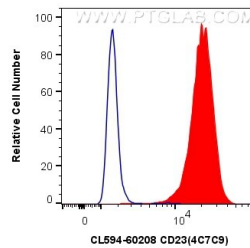
Immunofluorescent analysis of (4% PFA) fixed human tonsillitis tissue using CL594-60208 (CD23 antibody) at dilution of 1:50.



Immunofluorescent analysis of (4% PFA) fixed human lymphoma tissue using CoraLite®594 CD23 antibody (CL594-60208, Clone: 4C7C9) at dilution of 1:200.



Immunofluorescent analysis of (4% PFA) fixed human lymphoma tissue using CoraLite®594 CD23 antibody (CL594-60208, Clone: 4C7C9) at dilution of 1:200.



1×10^6 U-937 cells were intracellularly stained with 0.4 ug CoraLite®594 Anti-Human CD23 (CL594-60208, Clone:4C7C9) (red), or 0.4 ug Mouse IgG2a Isotype Control (CL594-66360-2, Clone: K11A1B2A2) (blue). Cells were fixed with 4% PFA and permeabilized with Flow Cytometry Perm Buffer (PF00011-C).