

À des fins de recherche uniquement

# Anticorps Monoclonal anti-transgeline/SM22



Numéro de catalogue: CL594-60213

## Informations de base

Numéro de catalogue: CL594-60213	Numéro d'acquisition GenBank: BC004927	Méthode de purification: Purification par protéine G
Taille: 100ul, Concentration: 1000 µg/ml by Nanodrop;	Identification du gène (NCBI): 6876	CloneNo.: 2A10C2
Hôte: Mouse	Nom complet: transgeline	Dilutions recommandées: IF 1:50-1:500
Isotype: IgG1	MW calculé: 22 kDa	Excitation/Emission maxima wavelengths: 588 nm / 604 nm
Immunogen Catalog Number: AG0764	MW observés: 18+22 kDa	

## Applications

Applications testées:  
IF  
Spécificité de l'espèce:  
Humain, porc, rat, souris

Contrôles positifs:  
IF : tissu cardiaque de souris,

## Informations générales

The transgeline family is a group of proteins that belong to 22 kDa actin-related corpnin superfamily. Of all three isoforms, transgeline 1 is the best characterized. Transgeline 1, also known as SM22 alpha, is a specific marker for differentiated smooth muscle cells. Transgeline 2, also known as SM22 beta, is expressed by both smooth muscle and non-smooth muscle cells in a temporally and spatially regulated pattern. Transgeline 3, also known as NP25, is only found in highly differentiated neuronal cells.

## Stockage

Stockage:  
Stocker à -20 °C. Éviter toute exposition à la lumière. Stable pendant un an après l'expédition.  
Tampon de stockage:  
PBS avec glycérol à 50 %, Proclin300 à 0,05 % et BSA à 0,5 %, pH 7,3.  
L'aliquotage n'est pas nécessaire pour le stockage à -20C

**\*\*\* Les 20ul contiennent 0,1% de BSA.**

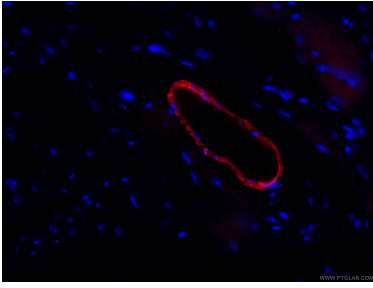
For technical support and original validation data for this product please contact:

T: 1 (888) 4PTGLAB (1-888-478-4522) (toll free  
in USA), or 1(312) 455-8498 (outside USA)

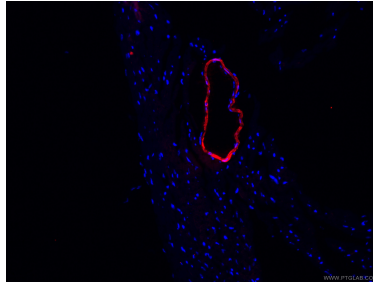
E: [proteintech@ptglab.com](mailto:proteintech@ptglab.com)  
W: [ptglab.com](http://ptglab.com)

This product is exclusively available under Proteintech Group brand and is not available to purchase from any other manufacturer.

## Données de validation sélectionnées



Immunofluorescent analysis of (4% PFA) fixed mouse heart tissue using CL594-60213 (transgelin/SM22 antibody) at dilution of 1:100.



Immunofluorescent analysis of (4% PFA) fixed mouse heart tissue using CL594-60213 (transgelin/SM22 antibody) at dilution of 1:100.