

À des fins de recherche uniquement

# Anticorps Monoclonal anti-CD44

Numéro de catalogue: CL594-60224



## Informations de base

Numéro de catalogue: CL594-60224	Numéro d'acquisition GenBank: BC004372	Méthode de purification: Purification par protéine A
Taille: 100ul , Concentration: 1000 µg/ml by Nanodrop;	Identification du gène (NCBI): 960	CloneNo.: 6F4H2
Hôte: Mouse	Nom complet: CD44 molecule (Indian blood group)	Dilutions recommandées: IF 1:50-1:500
Isotype: IgG2a	MW calculé 742 aa, 82 kDa	Excitation/Emission maxima wavelengths: 588 nm / 604 nm
Immunogen Catalog Number: AG7633		

## Applications

Applications testées: IF	Contrôles positifs: IF : tissu de cancer du poumon humain,
Spécificité de l'espèce: Humain, porc	

## Informations générales

CD44 is a type I transmembrane glycoprotein that mediates cell-cell and cell-matrix interactions through its affinity for hyaluronic acid (HA) and possibly also through its affinity for other ligands. Adhesion with HA plays an important role in cell migration, tumor growth and progression. CD44 is also involved in lymphocyte activation, recirculation and homing, and in hematopoiesis. This protein exists in multiple forms (with molecular weight ranging from 16 kDa to over 200 kDa) generated by alternative RNA splicing and extensive post-translational modifications. The antibody is conjugated with CL594, Ex/Em 593 nm/614 nm.

## Stockage

**Stockage:**  
Stocker à -20 °C. Éviter toute exposition à la lumière. Stable pendant un an après l'expédition.  
**Tampon de stockage:**  
PBS avec glycérol à 50 %, Proclin300 à 0,05 % et BSA à 0,5 %, pH 7,3.  
L'aliquotage n'est pas nécessaire pour le stockage à -20C

\*\*\* Les 20ul contiennent 0,1% de BSA.

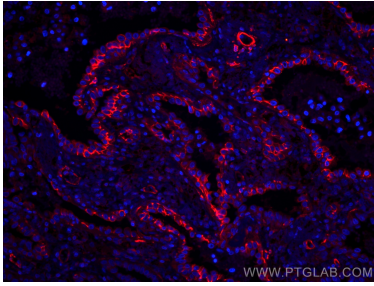
For technical support and original validation data for this product please contact:

T: 1 (888) 4PTGLAB (1-888-478-4522) (toll free  
in USA), or 1(312) 455-8498 (outside USA)

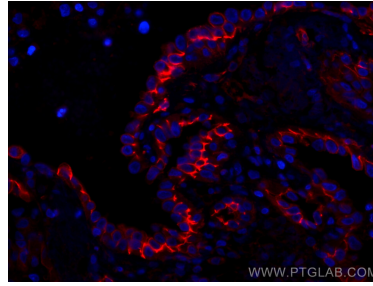
E: [proteintech@ptglab.com](mailto:proteintech@ptglab.com)  
W: [ptglab.com](http://ptglab.com)

This product is exclusively available under Proteintech Group brand and is not available to purchase from any other manufacturer.

## Données de validation sélectionnées



Immunofluorescent analysis of (4% PFA) fixed human lung cancer tissue using CoraLite® 594 CD44 antibody (CL594-60224, Clone: 6F4H2 ) at dilution of 1:200.



Immunofluorescent analysis of (4% PFA) fixed human lung cancer tissue using CoraLite® 594 CD44 antibody (CL594-60224, Clone: 6F4H2 ) at dilution of 1:200.