

À des fins de recherche uniquement

Anticorps Monoclonal anti-Cytoglobin



Numéro de catalogue: **CL594-60228**

Informations de base

Numéro de catalogue: CL594-60228	Numéro d'acquisition GenBank: BC029798	Méthode de purification: Purification par protéine G
Taille: 100ul , Concentration: 1000 µg/ml by Nanodrop;	Identification du gène (NCBI): 114757	CloneNo.: 4C7E11
Hôte: Mouse	Nom complet: cytoglobin	Excitation/Emission maxima wavelengths: 588 nm / 604 nm
Isotype: IgG1	MW calculé 190 aa, 21 kDa	
Immunogen Catalog Number: AG4161	MW observés: 27-29 kDa	

Applications

Applications testées:
Spécificité de l'espèce:
Humain, porc, rat, souris

Informations générales

Cytoglobin is a ubiquitously expressed hexacoordinate hemoglobin that may facilitate diffusion of oxygen through tissues. The protein, with calculated MW of 21 kDa, runs as a 29kd one in canine retina, kidney, liver, lung, and heart. It may be caused by posttranslational modification of the protein. Various immuno-staining patterns were reported including nuclear, cytoplasm and extracellular location.

Stockage

Stockage:
Stocker à -20 °C. Éviter toute exposition à la lumière. Stable pendant un an après l'expédition.
Tampon de stockage:
PBS avec glycérol à 50 %, Proclin300 à 0,05 % et BSA à 0,5 %, pH 7,3.
L'aliquotage n'est pas nécessaire pour le stockage à -20C

***** Les 20ul contiennent 0,1% de BSA.**

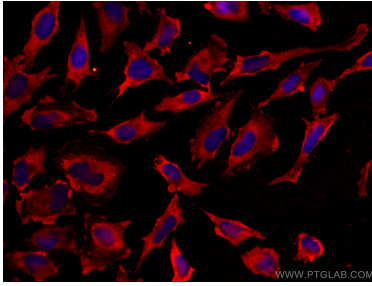
For technical support and original validation data for this product please contact:

T: 1 (888) 4PTGLAB (1-888-478-4522) (toll free
in USA), or 1(312) 455-8498 (outside USA)

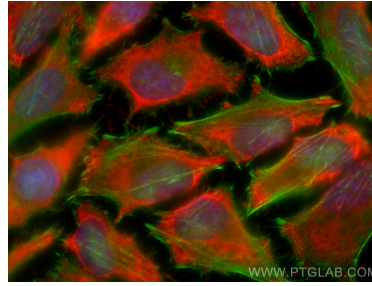
E: proteintech@ptglab.com
W: ptglab.com

This product is exclusively available under Proteintech Group brand and is not available to purchase from any other manufacturer.

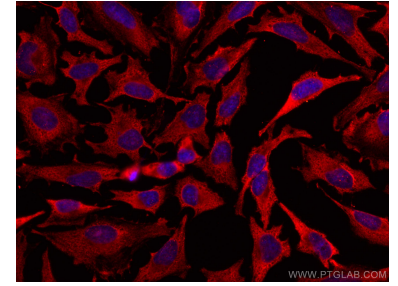
Données de validation sélectionnées



Immunofluorescent analysis of (-20°C Methanol) fixed HeLa cells using CoraLite®594 Cytoglobin antibody (CL594-60228, Clone: 4C7E11) at dilution of 1:200.



Immunofluorescent analysis of (-20°C Ethanol) fixed HeLa cells using CoraLite®594 Cytoglobin antibody (CL594-60228, Clone: 4C7E11) at dilution of 1:200, CL488-Phalloidin (green).



Immunofluorescent analysis of (-20°C Methanol) fixed HeLa cells using CoraLite®594 Cytoglobin antibody (CL594-60228, Clone: 4C7E11) at dilution of 1:200.