

À des fins de recherche uniquement

Anticorps Monoclonal anti-PGRMC2

Numéro de catalogue: **CL594-60249** **Phare**



Informations de base

Numéro de catalogue: CL594-60249	Numéro d'acquisition GenBank: BC016692	Méthode de purification: Purification par protéine A
Taille: 100ul , Concentration: 1000 µg/ml by Nanodrop;	Identification du gène (NCBI): 10424	CloneNo.: 5F10D7
Hôte: Mouse	Nom complet: progesterone receptor membrane component 2	Dilutions recommandées: IF 1:50-1:500
Isotype: IgG2a	MW calculé 223 aa, 24 kDa	Excitation/Emission maxima wavelengths: 588 nm / 604 nm
Immunogen Catalog Number: AG20077	MW observés: 24+28 kDa	

Applications

Applications testées:

IF

Spécificité de l'espèce:

Humain, souris

Contrôles positifs:

IF : tissu de cancer du col de l'utérus humain,

Informations générales

Membrane-associated progesterone receptor component 2 (PGRMC2), also known as DG6 or PMBP, belongs to the cytochrome b5 family. This protein might play a role in cancer. The gene of PGRMC2 maps to chromosome 4q26, and encodes a 223-amino acid single-pass membrane protein with a cytochrome b5 heme-binding domain in its cytoplasmic domain. PGRMC2 has a calculated molecular weight of 24 kDa. The band of about 28 kDa detected by this monoclonal antibody is unknown but may represent phosphorylated form of PGRMC2 (PMID: 28104494).

Stockage

Stockage:

Stocker à -20 °C. Éviter toute exposition à la lumière.

Tampon de stockage:

PBS avec glycérol à 50 %, Proclin300 à 0,05 % et BSA à 0,5 %, pH 7,3.

L'aliquotage n'est pas nécessaire pour le stockage à -20C

***** Les 20ul contiennent 0,1% de BSA.**

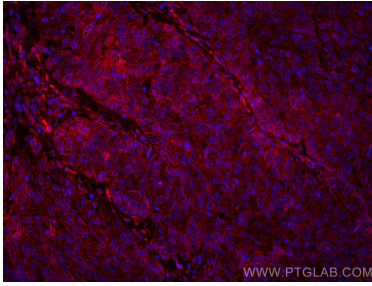
For technical support and original validation data for this product please contact:

T: 1 (888) 4PTGLAB (1-888-478-4522) (toll free in USA), or 1(312) 455-8498 (outside USA)

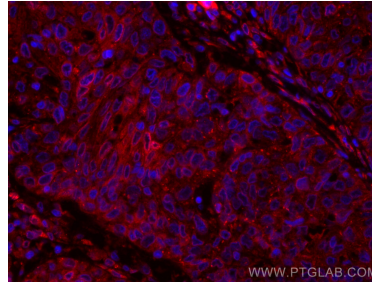
E: proteintech@ptglab.com
W: ptglab.com

This product is exclusively available under Proteintech Group brand and is not available to purchase from any other manufacturer.

Données de validation sélectionnées



Immunofluorescent analysis of (4% PFA) fixed human cervical cancer tissue using CoraLite®594 PGRMC2 antibody (CL594-60249, Clone: 5F10D7) at dilution of 1:200.



Immunofluorescent analysis of (4% PFA) fixed human cervical cancer tissue using CoraLite®594 PGRMC2 antibody (CL594-60249, Clone: 5F10D7) at dilution of 1:200.