

À des fins de recherche uniquement

Anticorps Monoclonal anti-PKM2-specific



Numéro de catalogue: **CL594-60268**

Phare

Informations de base

Numéro de catalogue: CL594-60268	Numéro d'acquisition GenBank: NM_002654	Méthode de purification: Purification par protéine G
Taille: 100ul , Concentration: 1000 µg/ml by Nanodrop;	Identification du gène (NCBI): 5315	CloneNo.: 1C11C7
Hôte: Mouse	Nom complet: PKM pyruvate kinase, muscle	Dilutions recommandées: IF 1:300-1:1200
Isotype: IgG1	MW calculé 58 kDa	Excitation/Emission maxima wavelengths: 588 nm / 604 nm
	MW observés: 58 kDa	

Applications

Applications testées:
FC (Intra), IF
Spécificité de l'espèce:
Humain, rat, souris

Contrôles positifs:
IF : cellules HepG2,

Informations générales

PKM, also named as OIP3, PK2, PK3, PKM, p58, THBP1, CTHBP and Tumor M2-PK, belongs to the pyruvate kinase family. It is glycolytic enzyme that catalyzes the transfer of a phosphoryl group from phosphoenolpyruvate (PEP) to ADP, generating ATP. It stimulates POU5F1-mediated transcriptional activation. PKM plays a general role in caspase independent cell death of tumor cells. PKM has 2 isoforms named as PKM1/M2. The activity of the M2 isoform can be inhibited by tyrosine kinase signalling in tumour cells. The primary pyruvate kinase isoform before tumour development is PK-M1; however, the primary isoform from four independent tumours is PK-M2 (PMID:18337823). The immunogen of this antibody is M2 isoform and this antibody is specific to PKM2 isoform.

Stockage

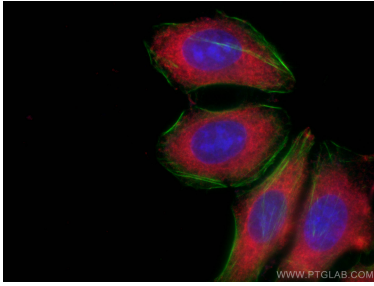
Stockage:
Stocker à -20 °C. Éviter toute exposition à la lumière. Stable pendant un an après l'expédition.
Tampon de stockage:
PBS avec glycérol à 50 %, Proclin300 à 0,05 % et BSA à 0,5 %, pH 7,3.
L'aliquotage n'est pas nécessaire pour le stockage à -20C

*** Les 20ul contiennent 0,1% de BSA.

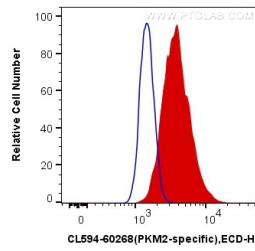
For technical support and original validation data for this product please contact:
T: 1 (888) 4PTGLAB (1-888-478-4522) (toll free in USA), or 1(312) 455-8498 (outside USA)
E: proteintech@ptglab.com
W: ptglab.com

This product is exclusively available under Proteintech Group brand and is not available to purchase from any other manufacturer.

Données de validation sélectionnées



Immunofluorescent analysis of (-20°C Ethanol) fixed HepG2 cells using CoraLite®594-conjugated PKM2-specific antibody (CL594-60268, Clone: 1C11C7) at dilution of 1:600.



1X10⁶ HeLa cells were intracellularly stained with 0.4 ug CoraLite®594 Anti-Human PKM2-specific (CL594-60268, Clone:1C11C7) (red), or 0.4 ug Mouse IgG1 Isotype Control (CL594-66360, Clone: T1F8D3F10) (blue). Cells were fixed with 4% PFA and permeabilized with Flow Cytometry Perm Buffer (PF00011-C).