

À des fins de recherche uniquement

Anticorps Monoclonal anti-PTEN

Numéro de catalogue: CL594-60300



Informations de base

Numéro de catalogue: CL594-60300	Numéro d'acquisition GenBank: BC005821	Méthode de purification: Purification par protéine A
Taille: 100ul, Concentration: 1000 µg/ml by Nanodrop;	Identification du gène (NCBI): 5728	CloneNo.: 5C10B6
Hôte: Mouse	Nom complet: phosphatase and tensin homolog	Dilutions recommandées: IF 1:50-1:500
Isotype: IgG2a	MW calculé 47 kDa	Excitation/Emission maxima wavelengths: 588 nm / 604 nm
Immunogen Catalog Number: AG17274	MW observés: 55 kDa	

Applications

Applications testées: FC (Intra), IF	Contrôles positifs: IF : cellules HepG2,
Spécificité de l'espèce: Humain, souris	

Informations générales

PTEN (also designated MMAC1), products of tumor suppressor genes, are found deleted in most human gliomas. The PTEN genes are also mutated in many other tumors, such as brain, breast, kidney and prostate cancers. PTEN is a protein tyrosine phosphatase that may terminate the signaling transduction pathways mediated by PI 3-kinase/Akt. PTEN has an apparent molecular weight of 55 kDa and it is located in the cytosol.

Stockage

Stockage:
Stocker à -20 °C. Éviter toute exposition à la lumière. Stable pendant un an après l'expédition.
Tampon de stockage:
PBS avec glycérol à 50 %, Proclin300 à 0,05 % et BSA à 0,5 %, pH 7,3.
L'aliquotage n'est pas nécessaire pour le stockage à -20C

***** Les 20ul contiennent 0,1% de BSA.**

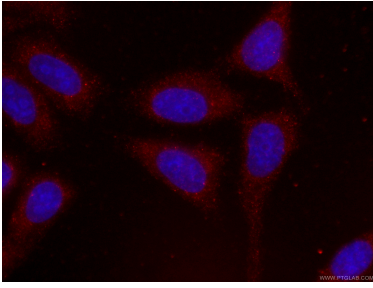
For technical support and original validation data for this product please contact:

T: 1 (888) 4PTGLAB (1-888-478-4522) (toll free
in USA), or 1(312) 455-8498 (outside USA)

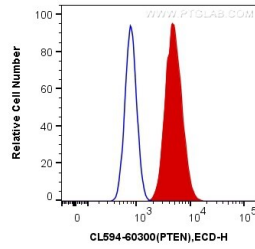
E: proteintech@ptglab.com
W: ptglab.com

This product is exclusively available under Proteintech Group brand and is not available to purchase from any other manufacturer.

Données de validation sélectionnées



Immunofluorescent analysis of (-20°C Ethanol) fixed HepG2 cells using CL594-60300 (PTEN antibody) at dilution of 1:100.



1X10⁶ HepG2 cells were intracellularly stained with 0.4 ug CoraLite®594 Anti-Human PTEN (CL594-60300, Clone:5C10B6) (red), or 0.4 ug Mouse IgG2a Isotype Control (CL594-66360-2, Clone: K11A1B2A2) (blue). Cells were fixed with 4% PFA and permeabilized with Flow Cytometry Perm Buffer (PF00011-C).