

À des fins de recherche uniquement

# Anticorps Monoclonal anti-HER2/ErbB2



Numéro de catalogue: **CL594-60311**

## Informations de base

<b>Numéro de catalogue:</b> CL594-60311	<b>Numéro d'acquisition GenBank:</b> BC156755	<b>Méthode de purification:</b> Purification par protéine A
<b>Taille:</b> 100ul, Concentration: 1000 µg/ml by Nanodrop;	<b>Identification du gène (NCBI):</b> 2064	<b>CloneNo.:</b> 1B12A7
<b>Hôte:</b> Mouse	<b>Nom complet:</b> v-erb-b2 erythroblastic leukemia viral oncogene homolog 2, neuro/glioblastoma derived oncogene homolog (avian)	<b>Dilutions recommandées:</b> IF 1:50-1:500
<b>Isotype:</b> IgG2b	<b>MW calculé</b> 1255 aa, 138 kDa	<b>Excitation/Emission maxima wavelengths:</b> 588 nm / 604 nm
<b>Immunogen Catalog Number:</b> AG16463		

## Applications

<b>Applications testées:</b> IF	<b>Contrôles positifs:</b> IF : tissu de cancer du sein humain,
<b>Spécificité de l'espèce:</b> Humain	

## Informations générales

HER2, also known as ErbB2 and Neu, is a 185-kDa transmembrane glycoprotein that is a member of the epidermal growth factor (EGF) receptor family of receptor tyrosine kinases. It has no ligand binding domain of its own and therefore cannot bind growth factors. However, it does bind tightly to other ligand-bound EGF receptor family members to form a heterodimer, stabilizing ligand binding and enhancing kinase-mediated activation of downstream signalling pathways, such as those involving mitogen-activated protein kinase and phosphatidylinositol-3 kinase. Amplification and/or overexpression of HER2 have been reported in numerous cancers, including breast and ovarian tumors. HER2 is a therapeutic target for the treatment of breast cancer and other carcinomas.

## Stockage

**Stockage:**  
Stocker à -20 °C. Éviter toute exposition à la lumière. Stable pendant un an après l'expédition.  
**Tampon de stockage:**  
PBS avec glycérol à 50 %, Proclin300 à 0,05 % et BSA à 0,5 %, pH 7,3.  
L'aliquotage n'est pas nécessaire pour le stockage à -20C

**\*\*\* Les 20ul contiennent 0,1% de BSA.**

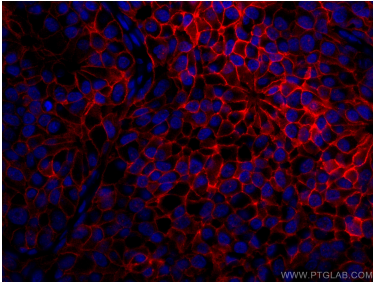
For technical support and original validation data for this product please contact:

T: 1 (888) 4PTGLAB (1-888-478-4522) (toll free in USA), or 1(312) 455-8498 (outside USA)

E: [proteintech@ptglab.com](mailto:proteintech@ptglab.com)  
W: [ptglab.com](http://ptglab.com)

**This product is exclusively available under Proteintech Group brand and is not available to purchase from any other manufacturer.**

## Données de validation sélectionnées



Immunofluorescent analysis of (4% PFA) fixed human breast cancer tissue using CoraLite®594 HER2/ErB2 antibody (CL594-60311, Clone: 1B12A7) at dilution of 1:100.