

À des fins de recherche uniquement

# Anticorps Monoclonal anti-c-SRC

Numéro de catalogue: CL594-60315

1 Publications



## Informations de base

Numéro de catalogue: CL594-60315	Numéro d'acquisition GenBank: BC011566	Méthode de purification: Purification par protéine A
Taille: 100ul , Concentration: 1000 µg/ml by Nanodrop;	Identification du gène (NCBI): 6714	CloneNo.: 5E10C4
Hôte: Mouse	Nom complet: v-src sarcoma (Schmidt-Ruppin A-2) viral oncogene homolog (avian)	Dilutions recommandées: IF 1:50-1:500
Isotype: IgG2b	MW calculé 60 kDa	Excitation/Emission maxima wavelengths: 588 nm / 604 nm
Immunogen Catalog Number: AG22306	MW observés: 60 kDa	

## Applications

### Applications testées:

FC (Intra), IF

### Demandes citées:

IF

### Spécificité de l'espèce:

Humain, souris, Hamster

### Espèces citées:

Humain

### Contrôles positifs:

IF : cellules MCF-7, tissu de cancer du sein humain

## Informations générales

SRC, also named as SRC1 and p60-Src, belongs to the protein kinase superfamily, Tyr protein kinase family and SRC subfamily. It is a non-receptor protein tyrosine kinase that plays pivotal roles in numerous cellular processes such as proliferation, migration, and transformation. In concert with PTK2B, SRC plays an important role in osteoclastic bone resorption. It promotes energy production in osteoclasts by activating mitochondrial cytochrome C oxidase.

## Publications notables

Autrice	Pubmed ID	Journal	Application
Zhenzhen Pan	35303882	Mol Cancer	IF

## Stockage

### Stockage:

Stocker à -20 °C. Éviter toute exposition à la lumière. Stable pendant un an après l'expédition.

### Tampon de stockage:

PBS avec glycérol à 50 %, Proclin300 à 0,05 % et BSA à 0,5 %, pH 7,3.

L'aliquotage n'est pas nécessaire pour le stockage à -20C

\*\*\* Les 20ul contiennent 0,1% de BSA.

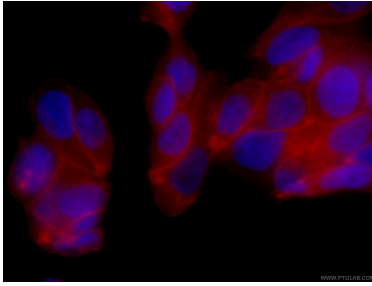
For technical support and original validation data for this product please contact:

T: 1 (888) 4PTGLAB (1-888-478-4522) (toll free  
in USA), or 1(312) 455-8498 (outside USA)

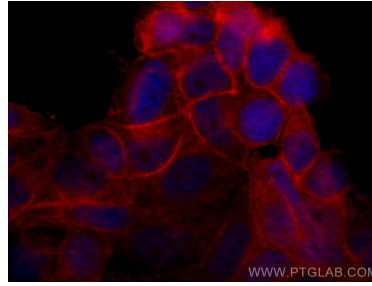
E: [proteintech@ptglab.com](mailto:proteintech@ptglab.com)  
W: [ptglab.com](http://ptglab.com)

This product is exclusively available under Proteintech Group brand and is not available to purchase from any other manufacturer.

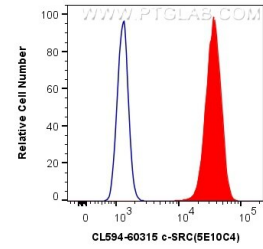
## Données de validation sélectionnées



Immunofluorescent analysis of (4% PFA) fixed MCF-7 cells using CL594-60315 (c-SRC antibody) at dilution of 1:100.



Immunofluorescent analysis of (4% PFA) fixed MCF-7 cells using CoraLite®594 c-SRC antibody (CL594-60315, Clone: 5E10C4) at dilution of 1:200.



$1 \times 10^6$  MCF-7 cells were intracellularly stained with 0.4  $\mu$ g CoraLite®594 Anti-Human c-SRC (CL594-60315, Clone:5E10C4) (red), or 0.4  $\mu$ g Mouse IgG2b Isotype Control (CL594-66360-3, Clone: K11B8C4B5) (blue). Cells were fixed with 4% PFA and permeabilized with Flow Cytometry Perm Buffer (PF00011-C).