

À des fins de recherche uniquement

# Anticorps Monoclonal anti-VCP

Numéro de catalogue: **CL594-60316** **Phare**



## Informations de base

<b>Numéro de catalogue:</b> CL594-60316	<b>Numéro d'acquisition GenBank:</b> BC007562	<b>Méthode de purification:</b> Purification par protéine G
<b>Taille:</b> 100ul , Concentration: 1000 µg/ml by Nanodrop;	<b>Identification du gène (NCBI):</b> 7415	<b>CloneNo.:</b> 2A4B10
<b>Hôte:</b> Mouse	<b>Nom complet:</b> valosin-containing protein	<b>Dilutions recommandées:</b> IF 1:50-1:500
<b>Isotype:</b> IgG1	<b>MW calculé:</b> 89 kDa	<b>Excitation/Emission maxima wavelengths:</b> 588 nm / 604 nm
<b>Immunogen Catalog Number:</b> AG1002	<b>MW observés:</b> 89 kDa	

## Applications

<b>Applications testées:</b> IF	<b>Contrôles positifs:</b> IF : cellules HeLa,
<b>Spécificité de l'espèce:</b> Humain, souris	

## Informations générales

VCP (Valosin-containing protein), also known as TER ATPase and 15S Mg<sup>2+</sup>-ATPase p97 subunit, belongs to the AAA ATPase family. VCP was first identified as a result of attempts to clone a putative peptide hormone called valosin. It was found that the cloned cDNA encoded a ubiquitously expressed 90 kDa cytosolic protein, termed VCP, which showed none of the characteristics of a peptide hormone precursor (PMID:1382975). Defects in VCP are the cause of inclusion body myopathy with early-onset Paget disease and frontotemporal dementia (IBMPFD) and amyotrophic lateral sclerosis type 14 with or without frontotemporal dementia (ALS14). VCP has a calculated molecular weight of 89 kDa and an apparent molecular weight of 90-100 kDa (PMID: 15732117, 1382975).

## Stockage

**Stockage:**  
Stocker à -20 °C. Éviter toute exposition à la lumière. Stable pendant un an après l'expédition.  
**Tampon de stockage:**  
PBS avec glycérol à 50 %, Proclin300 à 0,05 % et BSA à 0,5 %, pH 7,3.  
L'aliquotage n'est pas nécessaire pour le stockage à -20C

**\*\*\* Les 20ul contiennent 0,1% de BSA.**

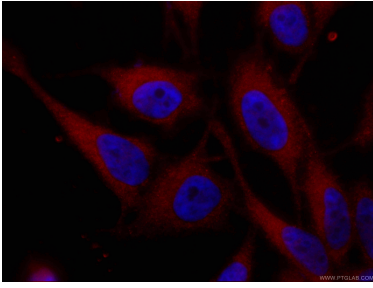
For technical support and original validation data for this product please contact:

T: 1 (888) 4PTGLAB (1-888-478-4522) (toll free in USA), or 1(312) 455-8498 (outside USA)

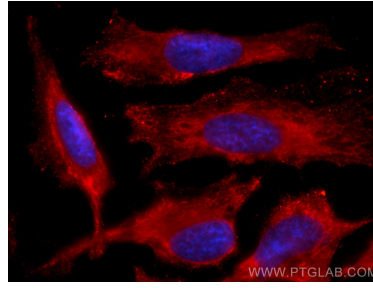
E: [proteintech@ptglab.com](mailto:proteintech@ptglab.com)  
W: [ptglab.com](http://ptglab.com)

**This product is exclusively available under Proteintech Group brand and is not available to purchase from any other manufacturer.**

## Données de validation sélectionnées



Immunofluorescent analysis of (-20°C Ethanol) fixed HeLa cells using CL594-60316 (VCP antibody) at dilution of 1:100.



Immunofluorescent analysis of (-20°C Ethanol) fixed HeLa cells using CoraLite®594 VCP antibody (CL594-60316, Clone: 2A4B10) at dilution of 1:200.