

À des fins de recherche uniquement

# Anticorps Monoclonal anti-CD11b

Numéro de catalogue: CL594-65055



## Informations de base

Numéro de catalogue: CL594-65055	Numéro d'acquisition GenBank: BC156991	Méthode de purification: Purification par affinité
Taille: 100tests , 5 µl/test	Identification du gène (NCBI): 16409	CloneNo.: M1/70
Hôte: Rat	Nom complet: integrin alpha M	Excitation/Emission maxima wavelengths: 588 nm / 604 nm
Isotype: IgG2b, kappa		

## Applications

Applications testées:  
FC

Spécificité de l'espèce:  
Humain, souris

## Informations générales

Integrins are cell adhesion receptors that are heterodimers composed of non-covalently associated  $\alpha$  and  $\beta$  subunits (PMID: 9779984). CD11b, also known as Integrin alpha M or CR3A, belongs to the integrin alpha chain family. CD11b forms an  $\alpha/\beta$  heterodimer with CD18 (integrin  $\beta$ 2). CD11b/CD18 is implicated in various adhesive interactions of monocytes, macrophages and granulocytes as well as in mediating the uptake of complement-coated particles and pathogens (PMID: 9558116; 20008295). CD11b/CD18 is a receptor for the complement protein fragment iC3b, and is also a receptor for fibrinogen, factor X and ICAM1 (PMID: 2971974; 15485828).

## Stockage

Stockage:  
Store at 2-8°C. Avoid exposure to light. Stable for one year after shipment.

Tampon de stockage:  
PBS avec azoture de sodium à 0,1 % et BSA à 0,5 %, pH 7,3.

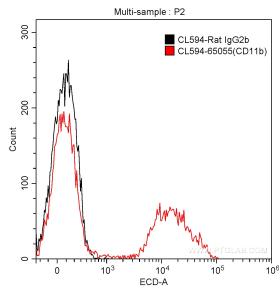
For technical support and original validation data for this product please contact:

T: 1 (888) 4PTGLAB (1-888-478-4522) (toll free  
in USA), or 1(312) 455-8498 (outside USA)

E: [proteintech@ptglab.com](mailto:proteintech@ptglab.com)  
W: [ptglab.com](http://ptglab.com)

This product is exclusively available under Proteintech Group brand and is not available to purchase from any other manufacturer.

## Données de validation sélectionnées



1X10<sup>6</sup> C57BL/6 mouse bone marrow cells were surface stained with 5 ul CoraLite®594-conjugated Anti-Mouse CD11b (CL594-65055, Clone: M1/70) (red) or isotype control antibody (black). Cells were not fixed.