

À des fins de recherche uniquement

Anticorps Monoclonal anti-IgG1 Isotype Control



Numéro de catalogue: **CL594-65124**

Informations de base

Numéro de catalogue:

CL594-65124

Taille:

100ug , 500 µg/ml

Hôte:

Mouse

Isotype:

IgG1

Numéro d'acquisition GenBank:

Identification du gène (NCBI):

16017

Nom complet:

immunoglobulin heavy constant
gamma 1 (G1m marker)

Méthode de purification:

Purification par affinité

CloneNo.:

MOPC-21

Excitation/Emission maxima
wavelengths:

588 nm / 604 nm

Applications

Applications testées:

FC

Spécificité de l'espèce:

Informations générales

The MOPC-21 immunoglobulin is useful as an isotype-matched control. The MOPC-21 immunoglobulin has an unknown binding specificity and is used as an isotype control for mouse IgG1 antibodies. This antibody has been quality-tested for flow cytometry as negative control.

Stockage

Stockage:

Store at 2-8°C. Avoid exposure to light. Stable for one year after shipment.

Tampon de stockage:

PBS avec glycérol à 50 %, Proclin300 à 0,05 % et BSA à 0,5 %, pH 7,3.

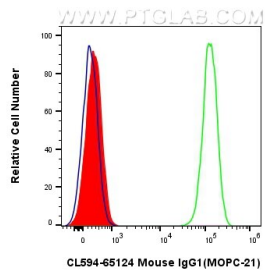
For technical support and original validation data for this product please contact:

T: 1 (888) 4PTGLAB (1-888-478-4522) (toll free
in USA), or 1(312) 455-8498 (outside USA)

E: proteintech@ptglab.com
W: ptglab.com

This product is exclusively available under Proteintech Group brand and is not available to purchase from any other manufacturer.

Données de validation sélectionnées



1X10⁶ Jurkat cells were surface stained with 0.5 ug CoraLite@594 Anti-Mouse IgG1 Isotype Control (CL594-65124, Clone:MOPC-21) (red), or 0.5 ug CoraLite@594 Anti-Human CD45 (HI30) (CL594-65109, Clone: HI30) (green) or unstained (blue). Cells were not fixed.