

À des fins de recherche uniquement

Anticorps Monoclonal anti-CD2

Numéro de catalogue: **CL594-65192**



Informations de base

Numéro de catalogue:

CL594-65192

Taille:

100tests , 5 µl/test

Hôte:

Mouse

Isotype:

Mouse IgG1, kappa

Numéro d'acquisition GenBank:

BC033583

Identification du gène (NCBI):

914

Nom complet:

CD2 molecule

MW calculé

351 aa, 39 kDa

Méthode de purification:

Purification par protéine G

CloneNo.:

TS1/8

Excitation/Emission maxima
wavelengths:

588 nm / 604 nm

Applications

Applications testées:

FC

Spécificité de l'espèce:

Humain

Informations générales

CD2 is a cell surface glycoprotein present on a majority of thymocytes, all mature T cells and subset of NK cells but not on B lymphocytes. It is a pan T-cell marker. CD2 interacts with lymphocyte function-associated antigen (LFA-3/CD58) and CD48/BCM1 to mediate adhesion between T-cells and other cell types. CD2 is implicated in the triggering of T-cells, the cytoplasmic domain is implicated in the signaling function.

Stockage

Stockage:

Stocker à une température comprise entre 2 °C et 8 °C. Éviter toute exposition à la lumière.

Tampon de stockage:

PBS avec azoture de sodium à 0,1 % et BSA à 0,5 %, pH 7,3.

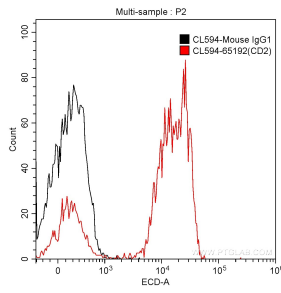
For technical support and original validation data for this product please contact:

T: 1 (888) 4PTGLAB (1-888-478-4522) (toll free
in USA), or 1(312) 455-8498 (outside USA)

E: proteintech@ptglab.com
W: ptglab.com

This product is exclusively available under Proteintech Group brand and is not available to purchase from any other manufacturer.

Données de validation sélectionnées



1X10⁶ human peripheral blood lymphocytes were surface stained with 5 ul CoraLite®594-conjugated Anti-Human CD2 (CL594-65192, Clone: TS1/8) (red) or isotype control antibody (black). Cells were not fixed.