

À des fins de recherche uniquement

Anticorps Monoclonal anti-CD62L

Numéro de catalogue: **CL594-65219**



Informations de base

Numéro de catalogue:
CL594-65219

Taille:
100ug, 0.5 mg/ml

Hôte:
Rat

Isotype:
IgG2a, kappa

Numéro d'acquisition GenBank:
BC052681

Identification du gène (NCBI):
20343

Nom complet:
selectin, lymphocyte

Méthode de purification:
Purification par protéine A

CloneNo.:
MEL14

Excitation/Emission maxima
wavelengths:
588 nm / 604 nm

Applications

Applications testées:
FC

Spécificité de l'espèce:
souris

Informations générales

CD62L, also known as L-selectin or SELL, is a member of the selectin family of adhesion molecules that also include CD62E (E-selectin) and CD62P (P-selectin) (PMID: 2663882, 2473156, 1382078). CD62L is a highly glycosylated protein of 95-105 kDa on neutrophils and 74 kDa on lymphocytes (PMID: 1382078; 1694883, 1695155). CD62L is expressed on the surface of most leukocytes, including lymphocytes, neutrophils, monocytes, eosinophils, hematopoietic progenitor cells, and immature thymocytes (PMID: 1694883, 1688580). It mediates the binding of lymphocytes to high endothelial venules (HEV) of peripheral lymph nodes through interactions with a constitutively expressed ligand, and is also involved in lymphocyte, neutrophil, and monocyte attachment to endothelium at sites of inflammation (PMID: 1382078).

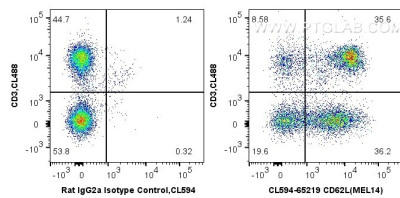
Stockage

Stockage:
Store at 2-8°C. Avoid exposure to light. Stable for one year after shipment.
Tampon de stockage:
PBS with 0.09% sodium azide.

For technical support and original validation data for this product please contact:
T: 1 (888) 4PTGLAB (1-888-478-4522) (toll free in USA), or 1(312) 455-8498 (outside USA)
E: proteintech@ptglab.com
W: ptglab.com

This product is exclusively available under Proteintech Group brand and is not available to purchase from any other manufacturer.

Données de validation sélectionnées



1X10⁶ mouse splenocytes were surface co-stained with CoraLite® Plus 488 Anti-Mouse CD3 (17A2) and 0.5 ug CoraLite® 594 Anti-Mouse CD62L (CL594-65219, Clone:MEL14) or 0.5 ug Isotype Control. Cells were not fixed.