

À des fins de recherche uniquement

Anticorps Monoclonal anti-6*His, His-Tag



Numéro de catalogue: **CL594-66005**

Informations de base

Numéro de catalogue: CL594-66005	Numéro d'acquisition GenBank: Identification du gène (NCBI):	Méthode de purification: Purification par protéine G
Taille: 100ul , Concentration: 1000 µg/ml by Nanodrop;	Nom complet: MW calculé 1 kDa	CloneNo.: 1B7G5
Hôte: Mouse		Dilutions recommandées: IF 1:50-1:500
Isotype: IgG1		Excitation/Emission maxima wavelengths: 588 nm / 604 nm

Applications

Applications testées: IF	Contrôles positifs: IF : cellules HEK-293 transfectées,
Spécificité de l'espèce: Protéine recombinante	

Informations générales

Protein tags are protein or peptide sequences located either on the C- or N- terminal of the target protein, which facilitates one or several of the following characteristics: solubility, detection, purification, localization and expression. His-tag is often used for affinity purification and binding assays. Expressed His-tagged proteins can be purified and detected easily because the string of histidine residues binds to several types of immobilized metal ions, including nickel, cobalt and copper, under specific buffer conditions. The His-tag antibody is a useful tool for monitoring of the His-tagged proteins, and recognizes His-tags placed at N-terminal, C-terminal, and internal regions of fusion proteins expressed in bacteria, insect, and mammalian cells.

Stockage

Stockage:
Stocker à -20 °C. Éviter toute exposition à la lumière. Stable pendant un an après l'expédition.
Tampon de stockage:
PBS avec glycérol à 50 %, Proclin300 à 0,05 % et BSA à 0,5 %, pH 7,3.
L'aliquotage n'est pas nécessaire pour le stockage à -20C

***** Les 20ul contiennent 0,1% de BSA.**

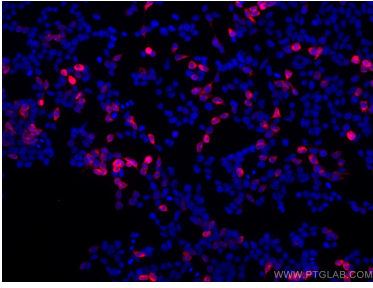
For technical support and original validation data for this product please contact:

T: 1 (888) 4PTGLAB (1-888-478-4522) (toll free in USA), or 1(312) 455-8498 (outside USA)

E: proteintech@ptglab.com
W: ptglab.com

This product is exclusively available under Proteintech Group brand and is not available to purchase from any other manufacturer.

Données de validation sélectionnées



Immunofluorescent analysis of (-20°C Ethanol) fixed Transfected HEK-293 cells using the CoraLite®594-conjugated version of this antibody, CL594-66005 (6thHis, His-Tag antibody), at dilution of 1:100.