

À des fins de recherche uniquement

# Anticorps Monoclonal anti-Beta Actin



Numéro de catalogue: CL594-66009

9 Publications

## Informations de base

<b>Numéro de catalogue:</b> CL594-66009	<b>Numéro d'acquisition GenBank:</b> NM_001101	<b>Méthode de purification:</b> Purification par protéine A
<b>Taille:</b> 100ul , Concentration: 1000 µg/ml by 60 Nanodrop;	<b>Identification du gène (NCBI):</b> actin, beta	<b>CloneNo.:</b> 2D4H5
<b>Hôte:</b> Mouse	<b>Nom complet:</b> actin, beta	<b>Dilutions recommandées:</b> WB 1:500-1:2000 IF 1:50-1:500
<b>Isotype:</b> IgG2b	<b>MW calculé</b> 42 kDa	<b>Excitation/Emission maxima wavelengths:</b> 588 nm / 604 nm

## Applications

### Applications testées:

FC (Intra), IF, WB

### Demandes citées:

WB

### Spécificité de l'espèce:

Humain, poisson-zèbre, rat, singe, souris, Hamster

### Espèces citées:

Humain, rat, souris

### Contrôles positifs:

WB : cellules HepG2, cellules HEK-293, cellules HeLa

IF : cellules MDCK, cellules HepG2

## Informations générales

Actins are highly conserved globular proteins that are involved in various types of cell motility and are ubiquitously expressed in all eukaryotic cells. At least six isoforms of actins are known in mammals and other vertebrates: alpha (ACTC1, cardiac muscle 1), alpha 1 (ACTA1, skeletal muscle) and 2 (ACTA2, aortic smooth muscle), beta (ACTB), gamma 1 (ACTG1) and 2 (ACTG2, enteric smooth muscle). Beta and gamma 1 are two non-muscle actin proteins. Most actins consist of 376aa, while ACTG2 (rich in muscles) has 375aa and ACTG1(found in non-muscle cells) has only 374aa. Beta actin has been widely used as the internal control in RT-PCR and Western Blotting as a 42-kDa protein. However, the 41 kDa cleaved fragment of beta actin can be generated during apoptosis process. This antibody can recognize all the actins. The isotype of this antibody is IgG2b. And the antibody is CL594(Ex/Em 593 nm/614 nm) conjugated.

## Publications notables

Autrice	Pubmed ID	Journal	Application
Jinxia Sun	35589023	J Ethnopharmacol	WB
Zhixiong Liu	35143418	J Clin Invest	WB
Wenxue Liang	35985246	Tissue Cell	WB

## Stockage

### Stockage:

Stocker à -20 °C. Éviter toute exposition à la lumière. Stable pendant un an après l'expédition.

### Tampon de stockage:

PBS avec glycérol à 50 %, Proclin300 à 0,05 % et BSA à 0,5 %, pH 7,3.

L'aliquotage n'est pas nécessaire pour le stockage à -20C

\*\*\* Les 20ul contiennent 0,1% de BSA.

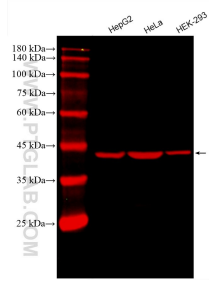
For technical support and original validation data for this product please contact:

T: 1 (888) 4PTGLAB (1-888-478-4522) (toll free in USA), or 1(312) 455-8498 (outside USA)

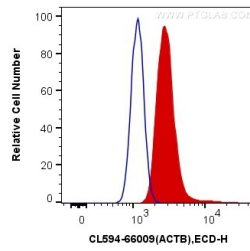
E: [proteintech@ptglab.com](mailto:proteintech@ptglab.com)  
W: [ptglab.com](http://ptglab.com)

This product is exclusively available under Proteintech Group brand and is not available to purchase from any other manufacturer.

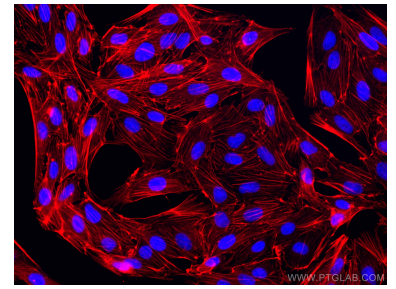
## Données de validation sélectionnées



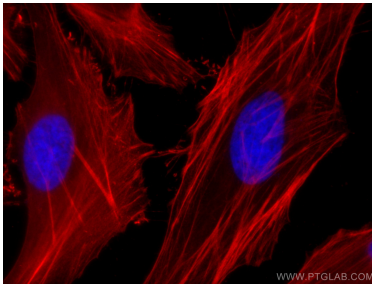
Various lysates were subjected to SDS PAGE followed by western blot with CL594-66009 (Beta Actin antibody) at dilution of 1:1000 incubated at room temperature for 1.5 hours.



$1 \times 10^6$  A431 cells were intracellularly stained with 0.8  $\mu$ g CoraLite@594 Anti-Human Beta Actin (CL594-66009, Clone:2D4H5) (red), or 0.8  $\mu$ g Control Antibody. Cells were fixed with 4% PFA and permeabilized with Flow Cytometry Perm Buffer (PF00011-C).



Immunofluorescent analysis of (-20°C Methanol) fixed MDCK cells using CoraLite@594 Beta Actin antibody (CL594-66009, Clone: 2D4H5) at dilution of 1:200.



Immunofluorescent analysis of (-20°C Methanol) fixed HepG2 cells using CoraLite@594 Beta Actin antibody (CL594-66009, Clone: 2D4H5) at dilution of 1:200.