

À des fins de recherche uniquement

# Anticorps Monoclonal anti-Protein C inhibitor



Numéro de catalogue: **CL594-66030**

## Informations de base

<b>Numéro de catalogue:</b> CL594-66030	<b>Numéro d'acquisition GenBank:</b> BC008915	<b>Méthode de purification:</b> Purification par protéine A
<b>Taille:</b> 100ul , Concentration: 1000 µg/ml by Nanodrop;	<b>Identification du gène (NCBI):</b> 5104	<b>CloneNo.:</b> 2H6G2
<b>Hôte:</b> Mouse	<b>Nom complet:</b> serpin peptidase inhibitor, clade A (alpha-1 antiproteinase, antitrypsin), member 5	<b>Dilutions recommandées:</b> IF 1:50-1:500
<b>Isotype:</b> IgG2a	<b>MW calculé</b> 46 kDa	<b>Excitation/Emission maxima wavelengths:</b> 588 nm / 604 nm
<b>Immunogen Catalog Number:</b> AG18094		

## Applications

<b>Applications testées:</b> IF	<b>Contrôles positifs:</b> IF : tissu de tumeur ovarienne humain,
<b>Spécificité de l'espèce:</b> Humain	

## Informations générales

SERPINA5 (also called Protein C Inhibitor, PCI ) is a serpin type of serine protease inhibitor that is found in many tissues and fluids in human, including blood plasma, seminal plasma and urine. PCI found in blood originates from the liver and is capable of inhibiting several serine proteases involved in the regulation of coagulation and fibrinolysis, including activated protein C, thrombin, factor Xa, various kallikreins and plasminogen activators. PCI has been found to have antimicrobial and antitumor properties and thus appears to be a multi-functional protein.

## Stockage

**Stockage:**  
Stocker à -20 °C. Éviter toute exposition à la lumière.  
**Tampon de stockage:**  
PBS avec glycérol à 50 %, Proclin300 à 0,05 % et BSA à 0,5 %, pH 7,3.  
L'aliquotage n'est pas nécessaire pour le stockage à -20C

**\*\*\* Les 20ul contiennent 0,1% de BSA.**

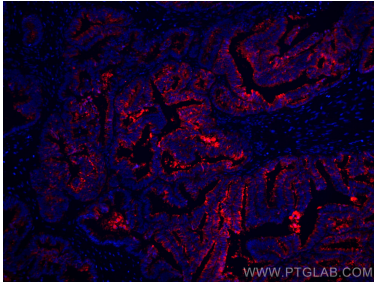
For technical support and original validation data for this product please contact:

T: 1 (888) 4PTGLAB (1-888-478-4522) (toll free in USA), or 1(312) 455-8498 (outside USA)

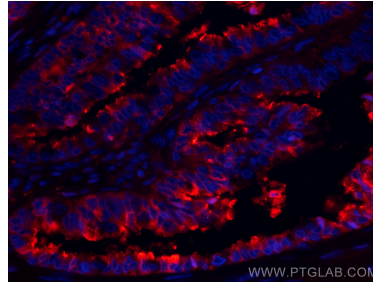
E: [proteintech@ptglab.com](mailto:proteintech@ptglab.com)  
W: [ptglab.com](http://ptglab.com)

**This product is exclusively available under Proteintech Group brand and is not available to purchase from any other manufacturer.**

## Données de validation sélectionnées



Immunofluorescent analysis of (4% PFA) fixed human ovary tumor tissue using CoraLite®594 Protein C inhibitor antibody (CL594-66030, Clone: 2H6G2 ) at dilution of 1:200.



Immunofluorescent analysis of (4% PFA) fixed human ovary tumor tissue using CoraLite®594 Protein C inhibitor antibody (CL594-66030, Clone: 2H6G2 ) at dilution of 1:200.