

À des fins de recherche uniquement

Anticorps Monoclonal anti-Alpha Tubulin



Numéro de catalogue: **CL594-66031**

3 Publications

Informations de base

Numéro de catalogue: CL594-66031	Numéro d'acquisition GenBank: BC009314	Méthode de purification: Purification par protéine A
Taille: 100ul , Concentration: 1000 µg/ml by Nanodrop;	Identification du gène (NCBI): 10376	CloneNo.: 1E4C11
Hôte: Mouse	Nom complet: tubulin, alpha 1b	Dilutions recommandées: WB 1:300-1:500 IF 1:50-1:500
Isotype: IgG2b	MW calculé 50 kDa	Excitation/Emission maxima wavelengths: 588 nm / 604 nm
Immunogen Catalog Number: AG18034		

Applications

Applications testées: FC (Intra), IF, WB	Contrôles positifs:
Demandes citées: IF	WB : cellules HeLa, cellules HEK-293, cellules HSC-T6, cellules NIH/3T3
Spécificité de l'espèce: canin, Humain, rat, souris	IF : cellules HepG2, cellules HeLa
Espèces citées: Humain, souris	

Informations générales

There are five tubulins in human cells: alpha, beta, gamma, delta, and epsilon. Tubulins are conserved across species. They form heterodimers, which multimerize to form a microtubule filament. An alpha and beta tubulin heterodimer is the basic structural unit of microtubules. The heterodimer does not come apart once formed. The alpha and beta tubulins, which are each about 55 kDa MW, are homologous but not identical. Alpha tubulin is useful for scientists across fields as an internal control due to its high, ubiquitous expression pattern. Tubulin expression may vary according to resistance to antimicrobial and antimetabolic drugs. This antibody is CL594(Ex/Em 593 nm/614 nm) conjugated.

Publications notables

Autrice	Pubmed ID	Journal	Application
Juan Lin	36430853	Int J Mol Sci	IF
Shizhen Dai	35741354	Biology (Basel)	IF
Long-Fei Wu	35354913	Exp Mol Med	IF

Stockage

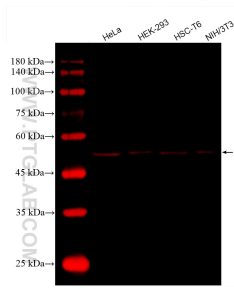
Stockage:
Stocker à -20 °C. Éviter toute exposition à la lumière. Stable pendant un an après l'expédition.
Tampon de stockage:
PBS avec glycérol à 50 %, Proclin300 à 0,05 % et BSA à 0,5 %, pH 7,3.
L'aliquotage n'est pas nécessaire pour le stockage à -20C

*** Les 20ul contiennent 0,1% de BSA.

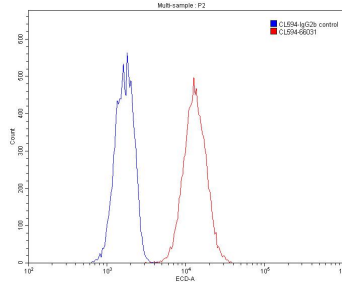
For technical support and original validation data for this product please contact:
T: 1 (888) 4PTGLAB (1-888-478-4522) (toll free in USA), or 1(312) 455-8498 (outside USA)
E: proteintech@ptglab.com
W: ptglab.com

This product is exclusively available under Proteintech Group brand and is not available to purchase from any other manufacturer.

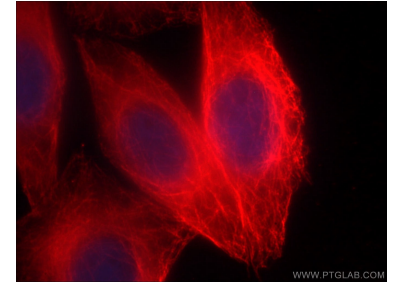
Données de validation sélectionnées



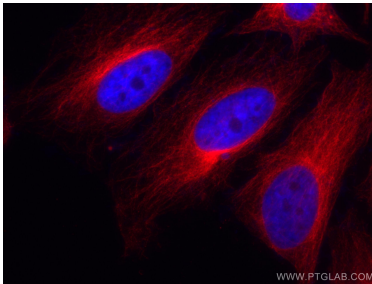
Various lysates were subjected to SDS PAGE followed by western blot with CL594-66031 (Alpha Tubulin antibody) at dilution of 1:500 incubated at room temperature for 1.5 hours.



1×10^6 HepG2 cells were stained with 0.20ug alpha Tubulin antibody (CL594-66031, red) and control antibody (blue). Fixed with 90% MeOH.



Immunofluorescent analysis of (-20°C Ethanol) fixed HepG2 cells using CL594-66031 (alpha Tubulin antibody) at dilution of 1:100.



Immunofluorescent analysis of (4% PFA) fixed HeLa cells using the Coralite®594-conjugated version of this antibody, CL594-66031 (alpha Tubulin antibody), at dilution of 1:100.