

À des fins de recherche uniquement

Anticorps Monoclonal anti-LONP1

Numéro de catalogue: CL594-66043



Informations de base

Numéro de catalogue: CL594-66043	Numéro d'acquisition GenBank: BC000235	Méthode de purification: Purification par protéine G
Taille: 100ul , Concentration: 2000 µg/ml by Nanodrop;	Identification du gène (NCBI): 9361	CloneNo.: 1C6C12
Hôte: Mouse	Nom complet: lon peptidase 1, mitochondrial	Dilutions recommandées: IF 1:50-1:500
Isotype: IgG1	MW calculé: 106 kDa	Excitation/Emission maxima wavelengths: 588 nm / 604 nm
Immunogen Catalog Number: AG7306	MW observés: 100 kDa	

Applications

Applications testées: IF	Contrôles positifs: IF : cellules C6,
Spécificité de l'espèce: Humain, rat, souris	

Informations générales

LONP1(Lon protease homolog, mitochondrial) is also named as LONP, LONHS, HLON, LON, PRSS15, PIM1, MGC1498 and belongs to the peptidase S16 family. It seems to play a major role in the elimination of oxidatively modified proteins in the mitochondrial matrix(PMID:18021745). LONP1, also a nuclearly encoded and mitochondrially located stress-responsive protease, is involved in heme-mediated ALAS-1 turnover(PMID:21659532). It recognizes specific surface determinants or folds, initiates proteolysis at solvent-accessible sites, and generates unfolded polypeptides that are then processively degraded(PMID:15870080).

Stockage

Stockage:
Stocker à -20 °C. Éviter toute exposition à la lumière. Stable pendant un an après l'expédition.
Tampon de stockage:
PBS avec glycérol à 50 %, Proclin300 à 0,05 % et BSA à 0,5 %, pH 7,3.
L'aliquotage n'est pas nécessaire pour le stockage à -20C

***** Les 20ul contiennent 0,1% de BSA.**

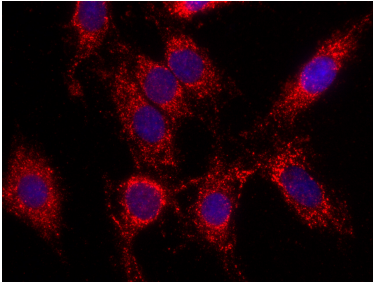
For technical support and original validation data for this product please contact:

T: 1 (888) 4PTGLAB (1-888-478-4522) (toll free
in USA), or 1(312) 455-8498 (outside USA)

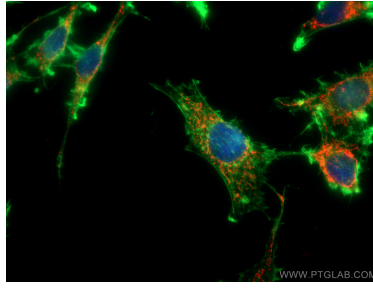
E: proteintech@ptglab.com
W: ptglab.com

This product is exclusively available under Proteintech Group brand and is not available to purchase from any other manufacturer.

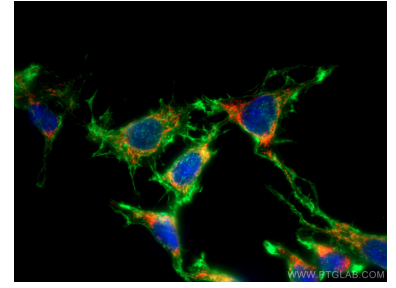
Données de validation sélectionnées



Immunofluorescent analysis of (4% PFA) fixed C6 cells using Coralite®594 LONP1 antibody (CL594-66043, Clone: 1C6C12) at dilution of 1:100. DAPI (blue).



Immunofluorescent analysis of (4% PFA) fixed C6 cells using Coralite®594 LONP1 antibody (CL594-66043, Clone: 1C6C12) at dilution of 1:100, CL488-phalloidine (green).



Immunofluorescent analysis of (-20°C Ethanol) fixed C6 cells using Coralite®594 LONP1 antibody (CL594-66043, Clone: 1C6C12) at dilution of 1:100, CL488-phalloidine (green).