

À des fins de recherche uniquement

Anticorps Monoclonal anti-Albumin

Numéro de catalogue: CL594-66051



Informations de base

Numéro de catalogue: CL594-66051	Numéro d'acquisition GenBank: BC034023	Méthode de purification: Purification par protéine G
Taille: 100ul, Concentration: 1000 µg/ml by Nanodrop;	Identification du gène (NCBI): 213	CloneNo.: 4A1C11
Hôte: Mouse	Nom complet: albumin	Dilutions recommandées: IF 1:50-1:500
Isotype: IgG1	MW calculé: 609 aa, 69 kDa	Excitation/Emission maxima wavelengths: 588 nm / 604 nm
Immunogen Catalog Number: AG9885	MW observés: 66 kDa	

Applications

Applications testées: FC (Intra), IF	Contrôles positifs: IF : tissu hépatique de souris, cellules HepG2
Spécificité de l'espèce: Humain, porc, rat	

Informations générales

Albumin is the most abundant protein in blood plasma. Alterations of level of serum albumin are linked to variety of diseases. Albumin is expressed exclusively by well-differentiated hepatocytes, thus anti-albumin has been used to mark hepatocytes. (21388516, 23832071)

Stockage

Stockage:
Stocker à -20 °C. Éviter toute exposition à la lumière. Stable pendant un an après l'expédition.
Tampon de stockage:
PBS avec glycérol à 50 %, Proclin300 à 0,05 % et BSA à 0,5 %, pH 7,3.
L'aliquotage n'est pas nécessaire pour le stockage à -20C

***** Les 20ul contiennent 0,1% de BSA.**

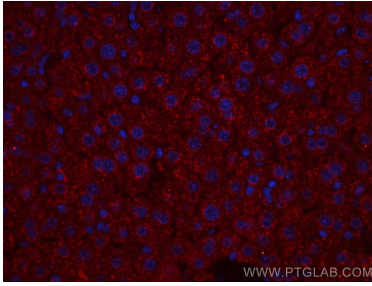
For technical support and original validation data for this product please contact:

T: 1 (888) 4PTGLAB (1-888-478-4522) (toll free
in USA), or 1(312) 455-8498 (outside USA)

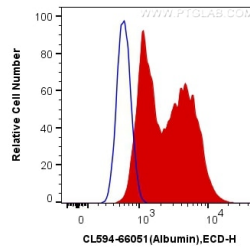
E: proteintech@ptglab.com
W: ptglab.com

This product is exclusively available under Proteintech Group brand and is not available to purchase from any other manufacturer.

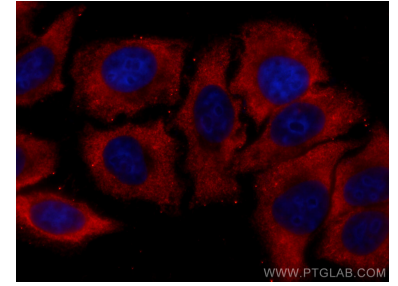
Données de validation sélectionnées



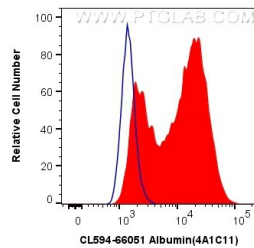
Immunofluorescent analysis of (4% PFA) fixed mouse liver tissue using CoraLite®594 Albumin antibody (CL594-66051, Clone: 4A1C11) at dilution of 1:200.



1X10⁶ HepG2 cells were intracellularly stained with 0.4 ug CoraLite®594 Anti-Human Albumin (CL594-66051, Clone:4A1C11) (red), or 0.4 ug Control Antibody. Cells were fixed with 4% PFA and permeabilized with Intracellular Staining Permeabilization Wash Buffer.



Immunofluorescent analysis of (-20°C Ethanol) fixed HepG2 cells using CoraLite®594 Albumin antibody (CL594-66051, Clone: 4A1C11) at dilution of 1:200.



1X10⁶ HepG2 cells were intracellularly stained with 0.4 ug CoraLite®594 Anti-Human Albumin (CL594-66051, Clone:4A1C11) (red), or 0.4 ug Control Antibody. Cells were fixed with 4% PFA and permeabilized with Flow Cytometry Perm Buffer (PF00011-C).