

À des fins de recherche uniquement

# Anticorps Monoclonal anti-RBM15

Numéro de catalogue: **CL594-66059** **Phare**



## Informations de base

|  |  |   |
|--|--|---|
| Numéro de catalogue:<br>CL594-66059                          | Numéro d'acquisition GenBank:<br>BC006397    | Méthode de purification:<br>Purification par protéine A       |
| Taille:<br>100ul , Concentration: 1000 µg/ml by<br>Nanodrop; | Identification du gène (NCBI):<br>64783      | CloneNo.:<br>4A1A4  |
| Hôte:<br>Mouse   | Nom complet:<br>RNA binding motif protein 15 | Dilutions recommandées:<br>IF 1:50-1:500                      |
| Isotype:<br>IgG2a  | MW calculé<br>105 kDa                        | Excitation/Emission maxima<br>wavelengths:<br>588 nm / 604 nm |
| Immunogen Catalog Number:<br>AG17970                         | MW observés:<br>107 kDa                      |   |

## Applications

|   |  |
|---|--|
| Applications testées:<br>FC (Intra), IF | Contrôles positifs:<br>IF : cellules HeLa, |
| Spécificité de l'espèce:<br>Humain      |  |

## Informations générales

RNA-binding motif protein 15 (RBM15) belongs to the SPEN protein family, which have repressor function in several signaling pathway, and may bind to RNA through interaction with spliceosome components. It was first described as a 5' translocation partner of the MAL gene in t(1,22)(p13;q13) infant acute megakaryocytic leukemia, and it functions in murine hematopoiesis through modulating Notch-induced transcriptional activation, which play crucial roles in leukemogenesis. Decreasing RBM15 levels with RNA interference could inhibit the growth and proliferation, block the cell cycle, and induce apoptosis in CML cells.

## Stockage

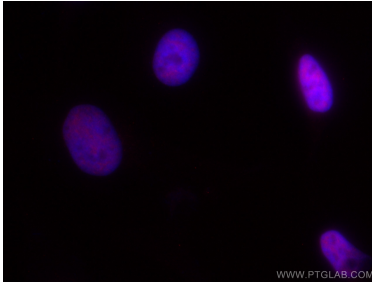
**Stockage:**  
Stocker à -20 °C. Éviter toute exposition à la lumière.  
**Tampon de stockage:**  
PBS avec glycérol à 50 %, Proclin300 à 0,05 % et BSA à 0,5 %, pH 7,3.  
L'aliquotage n'est pas nécessaire pour le stockage à -20C

**\*\*\* Les 20ul contiennent 0,1% de BSA.**

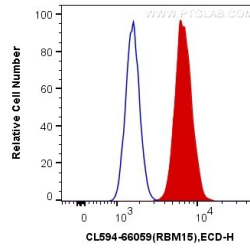
For technical support and original validation data for this product please contact:  
T: 1 (888) 4PTGLAB (1-888-478-4522) (toll free in USA), or 1(312) 455-8498 (outside USA) E: [proteintech@ptglab.com](mailto:proteintech@ptglab.com) W: [ptglab.com](http://ptglab.com)

This product is exclusively available under Proteintech Group brand and is not available to purchase from any other manufacturer.

## Données de validation sélectionnées



Immunofluorescent analysis of (4% PFA) fixed HeLa cells using CoraLite@594 RBM15 antibody (CL594-66059, Clone: 4A1A4) at dilution of 1:200.



1X10<sup>6</sup> HeLa cells were intracellularly stained with 0.4 ug CoraLite@594 Anti-Human RBM15 (CL594-66059, Clone:4A1A4) (red), or 0.4 ug Mouse IgG2a Isotype Control (CL594-66360-2, Clone: K11A1BZ2) (blue). Cells were fixed and permeabilized with Transcription Factor Staining Buffer Kit (PF00011).