

À des fins de recherche uniquement

Anticorps Monoclonal anti-Lamin B1

Numéro de catalogue: CL594-66095

2 Publications



Informations de base

| | | |
|--|---|---|
| Numéro de catalogue: CL594-66095 | Numéro d'acquisition GenBank: BC012295 | Méthode de purification: Purification par protéine G |
| Taille: 100ul , Concentration: 1000 µg/ml by Nanodrop; | Identification du gène (NCBI): 4001 | CloneNo.: 3C10G12 |
| Hôte: Mouse | Nom complet: lamin B1 | Dilutions recommandées: IF 1:50-1:500 |
| Isotype: IgG1 | MW calculé 66 kDa | Excitation/Emission maxima wavelengths: 588 nm / 604 nm |
| Immunogen Catalog Number: AG20522 | | |

Applications

| | |
|---|---|
| Applications testées: FC (Intra), IF | Contrôles positifs: IF : cellules HepG2, |
| Demandes citées: IF | |
| Spécificité de l'espèce: Humain, rat, souris | |
| Espèces citées: Humain | |

Informations générales

Lamins are components of the nuclear lamina, a fibrous layer on the nucleoplasmic side of the inner nuclear membrane, which is thought to provide a framework for the nuclear envelope and may also interact with chromatin. The nuclear lamina consists of a two-dimensional matrix of proteins located next to the inner nuclear membrane. The lamin family of proteins make up the matrix and are highly conserved in evolution. During mitosis, the lamina matrix is reversibly disassembled as the lamin proteins are phosphorylated. Vertebrate lamins consist of two types, A and B. This gene encodes one of the two B type proteins, B1. This protein is not suitable for samples where the nuclear envelope has been removed. The antibody is conjugated with CL594, Ex/Em 593 nm/614 nm.

Publications notables

| Autrice | Pubmed ID | Journal | Application |
|-------------|-----------|------------|-------------|
| Chunli Tan | 33508878 | Mol Oncol | IF |
| Shanshan Ma | 35525026 | Redox Biol | IF |

Stockage

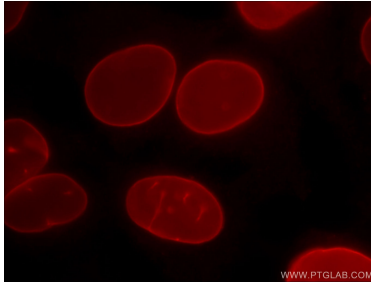
Stockage:
Stocker à -20 °C. Éviter toute exposition à la lumière. Stable pendant un an après l'expédition.
Tampon de stockage:
PBS avec glycérol à 50 %, Proclin300 à 0,05 % et BSA à 0,5 %, pH 7,3.
L'aliquotage n'est pas nécessaire pour le stockage à -20C

*** Les 20ul contiennent 0,1% de BSA.

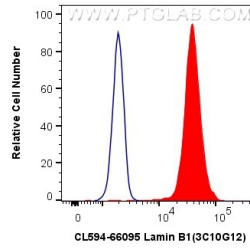
For technical support and original validation data for this product please contact:
T: 1 (888) 4PTGLAB (1-888-478-4522) (toll free in USA), or 1(312) 455-8498 (outside USA)
E: proteintech@ptglab.com
W: ptglab.com

This product is exclusively available under Proteintech Group brand and is not available to purchase from any other manufacturer.

Données de validation sélectionnées



Immunofluorescent analysis of (-20°C Ethanol) fixed HepG2 cells using CoraLite®594 Lamin B1 antibody (CL594-66095, Clone: 3C10G12) at dilution of 1:200.



1X10⁶ HeLa cells were intracellularly stained with 0.8 ug CoraLite®594 Anti-Human Lamin B1 (CL594-66095, Clone:3C10G12) (red), or 0.8 ug CoraLite®594 Mouse IgG1 Isotype Control (MOPC-21) (CL594-65124, Clone: MOPC-21) (blue). Cells were fixed and permeabilized with Transcription Factor Staining Buffer Kit (PF00011).