

À des fins de recherche uniquement

# Anticorps Monoclonal anti-PDH E1 Alpha



Numéro de catalogue: **CL594-66119**

Phare

## Informations de base

Numéro de catalogue: CL594-66119	Numéro d'acquisition GenBank: BC002406	Méthode de purification: Purification par protéine A
Taille: 100ul , Concentration: 1000 µg/ml by Nanodrop;	Identification du gène (NCBI): 5160	CloneNo.: 2B3C10
Hôte: Mouse	Nom complet: pyruvate dehydrogenase (lipoamide) alpha 1	Dilutions recommandées: WB 1:500-1:2000
Isotype: IgG2a	MW calculé 43 kDa	Excitation/Emission maxima wavelengths: 588 nm / 604 nm
Immunogen Catalog Number: AG12556	MW observés: 43 kDa	

## Applications

Applications testées:  
FC (Intra), WB  
Spécificité de l'espèce:  
Humain

Contrôles positifs:  
WB : cellules HepG2, cellules HEK-293

## Informations générales

PDHA1(Pyruvate dehydrogenase E1 component subunit alpha, somatic form, mitochondrial) is also named as PHE1A.It is one of the 3 enzymes of the pyruvate dehydrogenase complex which is a nuclear-encoded mitochondrial matrix multienzyme complex that provides the primary link between glycolysis and the tricarboxylic acid (TCA) cycle by catalyzing the irreversible conversion of pyruvate into acetyl-CoA(PMID:7853374).It has 4 isoforms produced by alternative splicing.Defects in PDHA1 are a cause of pyruvate dehydrogenase E1-alpha deficiency (PDHAD) and X-linked Leigh syndrome (X-LS).

## Stockage

Stockage:  
Stocker à -20 °C. Éviter toute exposition à la lumière. Stable pendant un an après l'expédition.  
Tampon de stockage:  
PBS avec glycérol à 50 %, Proclin300 à 0,05 % et BSA à 0,5 %, pH 7,3.  
L'aliquotage n'est pas nécessaire pour le stockage à -20C

**\*\*\* Les 20ul contiennent 0,1% de BSA.**

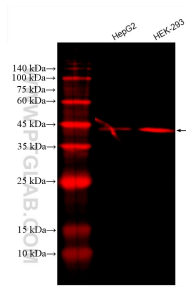
For technical support and original validation data for this product please contact:

T: 1 (888) 4PTGLAB (1-888-478-4522) (toll free  
in USA), or 1(312) 455-8498 (outside USA)

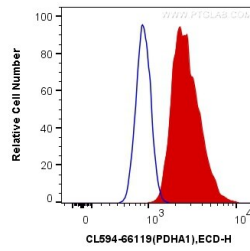
E: [proteintech@ptglab.com](mailto:proteintech@ptglab.com)  
W: [ptglab.com](http://ptglab.com)

**This product is exclusively available under Proteintech Group brand and is not available to purchase from any other manufacturer.**

## Données de validation sélectionnées



Various lysates were subjected to SDS PAGE followed by western blot with CL594-66119 (PDH E1 Alpha antibody) at dilution of 1:1000 incubated at room temperature for 1.5 hours.



1X10<sup>6</sup> HepG2 cells were intracellularly stained with 0.4 ug CoralLite®594 Anti-Human PDH E1 Alpha (CL594-66119, Clone:2B3C10) (red), or 0.4 ug Mouse IgG2a Isotype Control (CL594-66360-2, Clone: K11A1B2A2) (blue). Cells were fixed with 4% PFA and permeabilized with Flow Cytometry Perm Buffer (PF00011-C).