

À des fins de recherche uniquement

Anticorps Monoclonal anti-ACTC1-specific



Numéro de catalogue: **CL594-66125**

Informations de base

Numéro de catalogue: CL594-66125	Numéro d'acquisition GenBank: NM_005159	Méthode de purification: Purification par protéine G
Taille: 100ul , Concentration: 1000 µg/ml by Bradford method using BSA as the standard;	Identification du gène (NCBI): 70	CloneNo.: 1F2B9
Hôte: Mouse	Nom complet: actin, alpha, cardiac muscle 1	Dilutions recommandées: IF 1:50-1:500
Isotype: IgG1	MW calculé 42 kDa	Excitation/Emission maxima wavelengths: 588 nm / 604 nm

Applications

Applications testées: FC (Intra), IF	Contrôles positifs: IF : tissu cardiaque de souris,
Spécificité de l'espèce: Humain, porc, rat, souris	

Informations générales

Actins are highly conserved proteins that are involved in various types of cell motility and are ubiquitously expressed in all eukaryotic cells. The ACTC1 gene encodes cardiac muscle alpha-actin, the predominant actin isoform in adult heart, which interacts with a variety of proteins to produce the force for muscle contraction. This antibody is specific to the ACTC1. It does not cross-react with other actin isoforms. The antibody is conjugated with CL594, Ex/Em 593 nm/614 nm.

Stockage

Stockage:
Stocker à -20 °C. Éviter toute exposition à la lumière. Stable pendant un an après l'expédition.
Tampon de stockage:
PBS avec glycérol à 50 %, Proclin300 à 0,05 % et BSA à 0,5 %, pH 7,3.
L'aliquotage n'est pas nécessaire pour le stockage à -20C

***** Les 20ul contiennent 0,1% de BSA.**

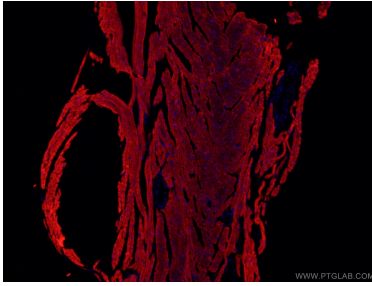
For technical support and original validation data for this product please contact:

T: 1 (888) 4PTGLAB (1-888-478-4522) (toll free
in USA), or 1(312) 455-8498 (outside USA)

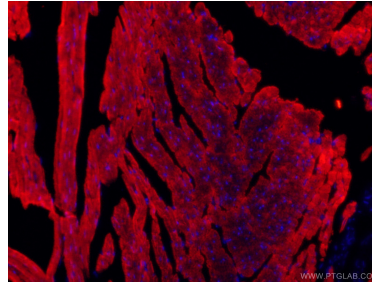
E: proteintech@ptglab.com
W: ptglab.com

This product is exclusively available under Proteintech Group brand and is not available to purchase from any other manufacturer.

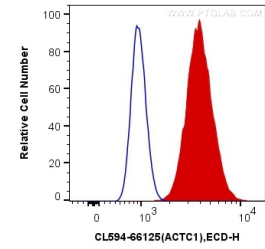
Données de validation sélectionnées



Immunofluorescent analysis of (4% PFA) fixed mouse heart tissue using CL594-66125 (ACTC1-specific antibody) at dilution of 1:100.



Immunofluorescent analysis of (4% PFA) fixed mouse heart tissue using CL594-66125 (ACTC1-specific antibody) at dilution of 1:100.



1×10^6 C2C12 cells were intracellularly stained with 0.4 μ g CoraLite@594 Anti-Human ACTC1-specific (CL594-66125, Clone:1F2B9) (red), or 0.4 μ g Mouse IgG1 Isotype Control (CL594-66360, Clone:T1F8D3F10) (blue). Cells were fixed with 4% PFA and permeabilized with Flow Cytometry Perm Buffer (PF00011-C).