

À des fins de recherche uniquement

Anticorps Monoclonal anti-RPL3

Numéro de catalogue: CL594-66130



Informations de base

Numéro de catalogue: CL594-66130	Numéro d'acquisition GenBank: BC012786	Méthode de purification: Purification par protéine G
Taille: 100ul , Concentration: 1000 µg/ml by Nanodrop;	Identification du gène (NCBI): 6122	CloneNo.: 2G1B8
Hôte: Mouse	Nom complet: ribosomal protein L3	Dilutions recommandées: WB 1:500-1:1000 IF 1:50-1:500
Isotype: IgG1	MW calculé 46/27 kDa	Excitation/Emission maxima wavelengths: 588 nm / 604 nm
Immunogen Catalog Number: AG20400	MW observés: 46 kDa	

Applications

Applications testées: IF, WB	Contrôles positifs:
Spécificité de l'espèce: Humain, rat, souris	WB : cellules HEK-293, cellules HeLa, cellules Jurkat IF : cellules HepG2,

Informations générales

Ribosomes, the complexes that catalyze protein synthesis, consist of a small 40S subunit and a large 60S subunit. Together these subunits are composed of 4 RNA species and approximately 80 structurally distinct proteins. RPL3, also named as TARBP-B and MGC104284, belongs to the ribosomal protein L3P family. This protein is a component of the 60S subunit. It can bind to the HIV-1 TAR mRNA, and it has been suggested that the protein contributes to tat-mediated transactivation. As is typical for genes encoding ribosomal proteins, there are multiple processed pseudogenes of this gene dispersed through the genome.

Stockage

Stockage:
Stocker à -20 °C. Éviter toute exposition à la lumière. Stable pendant un an après l'expédition.
Tampon de stockage:
PBS avec glycérol à 50 %, Proclin300 à 0,05 % et BSA à 0,5 %, pH 7,3.
L'aliquotage n'est pas nécessaire pour le stockage à -20C

***** Les 20ul contiennent 0,1% de BSA.**

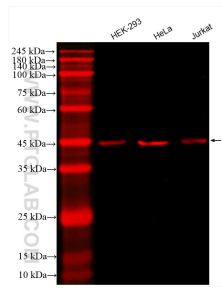
For technical support and original validation data for this product please contact:

T: 1 (888) 4PTGLAB (1-888-478-4522) (toll free
in USA), or 1(312) 455-8498 (outside USA)

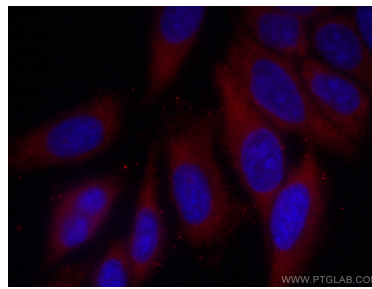
E: proteintech@ptglab.com
W: ptglab.com

This product is exclusively available under Proteintech Group brand and is not available to purchase from any other manufacturer.

Données de validation sélectionnées



Various lysates were subjected to SDS PAGE followed by western blot with CL594-66130 (RPL3 antibody) at dilution of 1:500 incubated at room temperature for 1.5 hours.



Immunofluorescent analysis of (-20°C Methanol) fixed HepG2 cells using CoraLite®594 RPL3 antibody (CL594-66130, Clone: 2G1B8) at dilution of 1:200.