

À des fins de recherche uniquement

Anticorps Monoclonal anti-BBS5

Numéro de catalogue: CL594-66136



Informations de base

Numéro de catalogue: CL594-66136	Numéro d'acquisition GenBank: BC044593	Méthode de purification: Purification par protéine G
Taille: 100ul , Concentration: 1000 µg/ml by Nanodrop;	Identification du gène (NCBI): 129880	CloneNo.: 4G8E12
Hôte: Mouse	Nom complet: Bardet-Biedl syndrome 5	Dilutions recommandées: IF 1:50-1:500
Isotype: IgG1	MW calculé 39 kDa	Excitation/Emission maxima wavelengths: 588 nm / 604 nm
Immunogen Catalog Number: AG6844		

Applications

Applications testées: IF	Contrôles positifs: IF : tissu rénal humain,
Spécificité de l'espèce: Humain, souris	

Informations générales

BBS5 encodes a protein that has been directly linked to Bardet-Biedl syndrome. Bardet-Biedl syndrome (BBS) is an autosomal recessive condition characterised by rod-cone dystrophy, postaxial polydactyly, central obesity, mental retardation, hypogonadism, and renal dysfunction. Other associated clinical findings in BBS patients include diabetes, hypertension and congenital heart defects. BBS expression varies both within and between families and diagnosis is often difficult. Experimentation in non-human eukaryotes suggests that BBS5 is expressed in ciliated cells and that it is required for the formation of cilia. Alternate transcriptional splice variants have been observed but have not been fully characterized.

Stockage

Stockage:
Stocker à -20 °C. Éviter toute exposition à la lumière.
Tampon de stockage:
PBS avec glycérol à 50 %, Proclin300 à 0,05 % et BSA à 0,5 %, pH 7,3.
L'aliquotage n'est pas nécessaire pour le stockage à -20C

***** Les 20ul contiennent 0,1% de BSA.**

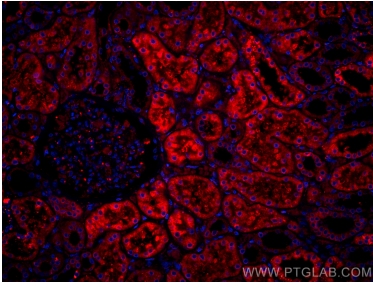
For technical support and original validation data for this product please contact:

T: 1 (888) 4PTGLAB (1-888-478-4522) (toll free
in USA), or 1(312) 455-8498 (outside USA)

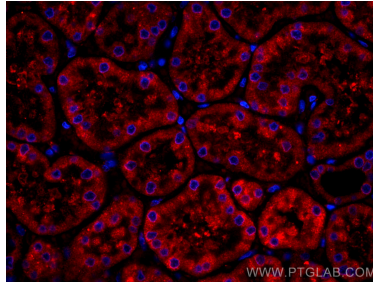
E: proteintech@ptglab.com
W: ptglab.com

This product is exclusively available under Proteintech Group brand and is not available to purchase from any other manufacturer.

Données de validation sélectionnées



Immunofluorescent analysis of (4% PFA) fixed human kidney tissue using CoraLite®594 BBS5 antibody (CL594-66136, Clone: 4G8E12) at dilution of 1:100.



Immunofluorescent analysis of (4% PFA) fixed human kidney tissue using CoraLite®594 BBS5 antibody (CL594-66136, Clone: 4G8E12) at dilution of 1:100.