

À des fins de recherche uniquement

Anticorps Monoclonal anti-Mammaglobin A



Numéro de catalogue: **CL594-66237**

Informations de base

Numéro de catalogue: CL594-66237	Numéro d'acquisition GenBank: BC128252	Méthode de purification: Purification par protéine G
Taille: 100ul , Concentration: 1000 µg/ml by Nanodrop;	Identification du gène (NCBI): 4250	CloneNo.: 2E5D4
Hôte: Mouse	Nom complet: secretoglobin, family 2A, member 2	Dilutions recommandées: IF 1:50-1:500
Isotype: IgG1	MW calculé 93 aa, 10 kDa	Excitation/Emission maxima wavelengths: 588 nm / 604 nm
Immunogen Catalog Number: AG22485		

Applications

Applications testées: IF	Contrôles positifs: IF : tissu de cancer du sein humain,
Spécificité de l'espèce: Humain	

Informations générales

Mammaglobin A, also known as SCGB2A2, is a member of the secretoglobin superfamily. Mammaglobin A is a breast cancer-associated antigen almost exclusively over-expressed in primary and metastatic human breast cancers, making it a specific molecular marker and a potential therapeutic target for breast cancer. This monoclonal antibody is raised against full-length of 93-amino acid human mammaglobin A.

Stockage

Stockage:
Stocker à -20 °C. Éviter toute exposition à la lumière.
Tampon de stockage:
PBS avec glycérol à 50 %, Proclin300 à 0,05 % et BSA à 0,5 %, pH 7,3.
L'aliquotage n'est pas nécessaire pour le stockage à -20C

***** Les 20ul contiennent 0,1% de BSA.**

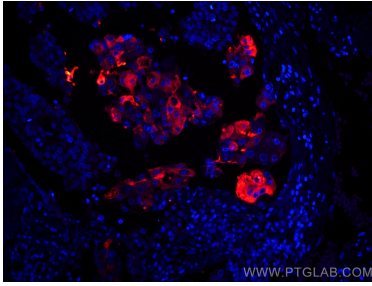
For technical support and original validation data for this product please contact:

T: 1 (888) 4PTGLAB (1-888-478-4522) (toll free
in USA), or 1(312) 455-8498 (outside USA)

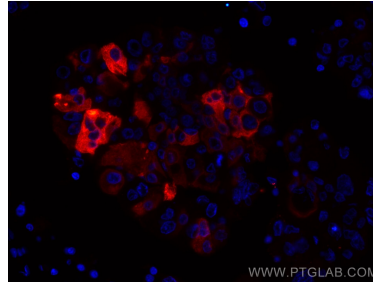
E: proteintech@ptglab.com
W: ptglab.com

This product is exclusively available under Proteintech Group brand and is not available to purchase from any other manufacturer.

Données de validation sélectionnées



Immunofluorescent analysis of (4% PFA) fixed human breast cancer tissue using CoraLite®594 Mammaglobin A antibody (CL594-66237, Clone: 2E5D4) at dilution of 1:200.



Immunofluorescent analysis of (4% PFA) fixed human breast cancer tissue using CoraLite®594 Mammaglobin A antibody (CL594-66237, Clone: 2E5D4) at dilution of 1:200.