

À des fins de recherche uniquement

Anticorps Monoclonal anti-Beta Tubulin



Numéro de catalogue: CL594-66240

1 Publications

Informations de base

Numéro de catalogue: CL594-66240	Numéro d'acquisition GenBank: BC000748	Méthode de purification: Purification par protéine A
Taille: 100ul , Concentration: 1000 µg/ml by Nanodrop;	Identification du gène (NCBI): 10381	CloneNo.: 1D4A4
Hôte: Mouse	Nom complet: tubulin, beta 3	Dilutions recommandées: IF 1:50-1:500
Isotype: IgG2a	MW calculé: 450 aa, 50 kDa	Excitation/Emission maxima wavelengths: 588 nm / 604 nm
Immunogen Catalog Number: AG0117	MW observés: 50-55 kDa	

Applications

Applications testées: FC (Intra), IF	Contrôles positifs: IF : cellules SH-SY5Y,
Demandes citées: IF	
Spécificité de l'espèce: Humain, namatode, poisson-zèbre, porc, rat, souris	

Informations générales

There are five tubulins in human cells: alpha, beta, gamma, delta, and epsilon. Tubulins are conserved across species. They form heterodimers, which multimerize to form a microtubule filament. An alpha and beta tubulin heterodimer is the basic structural unit of microtubules. The heterodimer does not come apart, once formed. The alpha and beta tubulins, which are each about 55 kDa MW, are homologous but not identical. Alpha and beta tubulins have been widely used as loading controls. Tubulin expression may vary according to resistance to antimicrobial and antimitotic drugs.

Publications notables

Autrice	Pubmed ID	Journal	Application
Wen Lu	36945460	bioRxiv	IF

Stockage

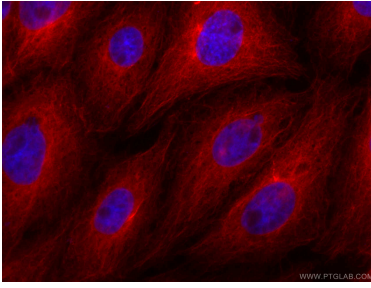
Stockage:
Stocker à -20 °C. Éviter toute exposition à la lumière. Stable pendant un an après l'expédition.
Tampon de stockage:
PBS avec glycérol à 50 %, Proclin300 à 0,05 % et BSA à 0,5 %, pH 7,3.
L'aliquotage n'est pas nécessaire pour le stockage à -20C

*** Les 20ul contiennent 0,1% de BSA.

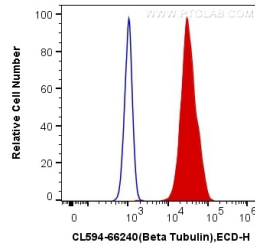
For technical support and original validation data for this product please contact:
T: 1 (888) 4PTGLAB (1-888-478-4522) (toll free in USA), or 1(312) 455-8498 (outside USA)
E: proteintech@ptglab.com
W: ptglab.com

This product is exclusively available under Proteintech Group brand and is not available to purchase from any other manufacturer.

Données de validation sélectionnées



Immunofluorescent analysis of (4% PFA) fixed SH-SY5Y cells using the CoraLite®594-conjugated version of this antibody, CL594-66240 (beta Tubulin antibody), at dilution of 1:100.



1X10⁶ HeLa cells were intracellularly stained with 0.4 ug CoraLite®594 Anti-Human Beta Tubulin (CL594-66240, Clone:1D4A4) (red), or 0.4 ug Mouse IgG2a Isotype Control (CL594-66360-2, Clone: K11A1B2A2) (blue). Cells were fixed with 4% PFA and permeabilized with Flow Cytometry Perm Buffer (PF00011-C).