

À des fins de recherche uniquement

# Anticorps Monoclonal anti-14-3-3 Sigma



Numéro de catalogue: **CL594-66251**

## Informations de base

Numéro de catalogue: CL594-66251	Numéro d'acquisition GenBank: BC002995	Méthode de purification: Purification par protéine G
Taille: 100ul , Concentration: 1000 µg/ml by Nanodrop;	Identification du gène (NCBI): 2810	CloneNo.: 3F10D9
Hôte: Mouse	Nom complet: stratifin	Dilutions recommandées: IF 1:50-1:500
Isotype: IgG1	MW calculé 28 kDa	Excitation/Emission maxima wavelengths: 588 nm / 604 nm
Immunogen Catalog Number: AG12644	MW observés: 28-30 kDa	

## Applications

Applications testées: FC (Intra), IF	Contrôles positifs: IF : cellules MCF-7,
Spécificité de l'espèce: Humain	

## Informations générales

14-3-3 Sigma is a member 14-3-3 family of highly conserved proteins participating in diverse cellular processes including cell cycle progression. It is exclusively present in various epithelial cells, and alternatively named as human epithelial marker (HEM), or stratifin. Alteration of its expression has been linked to cancer.

## Stockage

**Stockage:**  
Stocker à -20 °C. Éviter toute exposition à la lumière.  
**Tampon de stockage:**  
PBS avec glycérol à 50 %, Proclin300 à 0,05 % et BSA à 0,5 %, pH 7,3.  
L'aliquotage n'est pas nécessaire pour le stockage à -20C

**\*\*\* Les 20ul contiennent 0,1% de BSA.**

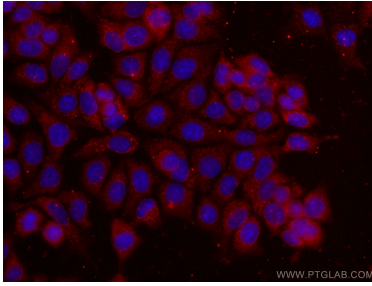
For technical support and original validation data for this product please contact:

T: 1 (888) 4PTGLAB (1-888-478-4522) (toll free  
in USA), or 1(312) 455-8498 (outside USA)

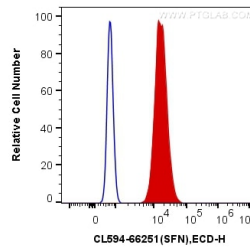
E: [proteintech@ptglab.com](mailto:proteintech@ptglab.com)  
W: [ptglab.com](http://ptglab.com)

**This product is exclusively available under Proteintech Group brand and is not available to purchase from any other manufacturer.**

## Données de validation sélectionnées



Immunofluorescent analysis of (-20°C Ethanol) fixed MCF-7 cells using CoraLite@594 14-3-3 Sigma antibody (CL594-66251, Clone: 3F10D9) at dilution of 1:100.



1X10<sup>6</sup> A431 cells were intracellularly stained with 0.2 ug CoraLite@594 Anti-Human 14-3-3 Sigma (CL594-66251, Clone:3F10D9) (red), or 0.2 ug Mouse IgG1 Isotype Control (CL594-66360, Clone: T1F8D3F10) (blue). Cells were fixed with 4% PFA and permeabilized with Flow Cytometry Perm Buffer (PF00011-C).