

À des fins de recherche uniquement

Anticorps Monoclonal anti-Cytochrome c



Numéro de catalogue: **CL594-66264**

Informations de base

Numéro de catalogue: CL594-66264	Numéro d'acquisition GenBank: BC009578	Méthode de purification: Purification par protéine A
Taille: 100ul , Concentration: 2000 µg/ml by Nanodrop;	Identification du gène (NCBI): 54205	CloneNo.: 2D8D11
Hôte: Mouse	Nom complet: cytochrome c, somatic	Excitation/Emission maxima wavelengths: 588 nm / 604 nm
Isotype: IgG2a	MW calculé 12 kDa	
Immunogen Catalog Number: AG24349		

Applications

Applications testées:
FC (Intra)
Spécificité de l'espèce:
Humain, rat, souris

Informations générales

Cytochrome c is a 12-15 kDa electron transporting protein located in the inner mitochondrial membrane. Upon apoptotic stimulation, cytochrome c can be released from mitochondria into cytoplasm, resulting in caspase-3 activation and apoptosis. Measurement of cytochrome c release from the mitochondria is useful for detection of the onset of apoptosis in cells. In addition, cytochrome c can also leave cells and be detectable in extra-cellular medium of apoptotic cells and serum of cancer patients. The level of serum cytochrome c may serve as a prognostic maker during cancer therapy.

Stockage

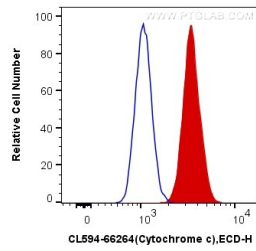
Stockage:
Stocker à -20 °C. Éviter toute exposition à la lumière. Stable pendant un an après l'expédition.
Tampon de stockage:
PBS avec glycérol à 50 %, Proclin300 à 0,05 % et BSA à 0,5 %, pH 7,3.
L'aliquotage n'est pas nécessaire pour le stockage à -20C

***** Les 20ul contiennent 0,1% de BSA.**

For technical support and original validation data for this product please contact:
T: 1 (888) 4PTGLAB (1-888-478-4522) (toll free in USA), or 1(312) 455-8498 (outside USA) E: proteintech@ptglab.com W: ptglab.com

This product is exclusively available under Proteintech Group brand and is not available to purchase from any other manufacturer.

Données de validation sélectionnées



1X10⁶ HepG2 cells were intracellularly stained with 0.4 ug CoraLite®594 Anti-Human Cytochrome c (CL594-66264, Clone:2D8D11) (red), or 0.4 ug Mouse IgG2a Isotype Control (CL594-66360-2, Clone: K11A1B2A2) (blue). Cells were fixed with 4% PFA and permeabilized with Flow Cytometry Perm Buffer (PF00011-C).