

À des fins de recherche uniquement

# Anticorps Monoclonal anti-L2HGDH

Numéro de catalogue: CL594-66269



## Informations de base

Numéro de catalogue: CL594-66269	Numéro d'acquisition GenBank: BC006117	Méthode de purification: Purification par protéine A
Taille: 100ul, Concentration: 1000 µg/ml by Nanodrop;	Identification du gène (NCBI): 79944	CloneNo.: 3D11C2
Hôte: Mouse	Nom complet: L-2-hydroxyglutarate dehydrogenase	Dilutions recommandées: IF 1:50-1:500
Isotype: IgG2a	MW calculé 463aa,50 kDa; 441aa,49 kDa	Excitation/Emission maxima wavelengths: 588 nm / 604 nm
Immunogen Catalog Number: AG8382	MW observés: 45 kDa	

## Applications

Applications testées: IF	Contrôles positifs: IF : tissu de cancer du sein humain,
Spécificité de l'espèce: Humain, porc	

## Informations générales

L2HGDH(L-2-hydroxyglutarate dehydrogenase, mitochondrial) is also named as duranin, C14orf160 and belongs to the L2HGDH family. The putative L2HGDH is predicted to be targeted to the mitochondria where its mitochondrial targeting sequence is presumably removed(PMID:16005139). Defects in L2HGDH are the cause of L-2-hydroxyglutaric aciduria (L2HGA). It has 2 isoforms produced by alternative splicing with the molecular weight of 50 kDa and 48 kDa. L2HGDH also can be detected as ~45kD due to the 51aa transit peptide cleaved.

## Stockage

**Stockage:**  
Stocker à -20 °C. Éviter toute exposition à la lumière.  
**Tampon de stockage:**  
PBS avec glycérol à 50 %, Proclin300 à 0,05 % et BSA à 0,5 %, pH 7,3.  
L'aliquotage n'est pas nécessaire pour le stockage à -20C

**\*\*\* Les 20ul contiennent 0,1% de BSA.**

For technical support and original validation data for this product please contact:

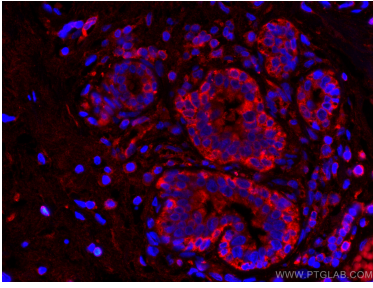
T: 1 (888) 4PTGLAB (1-888-478-4522) (toll free  
in USA), or 1(312) 455-8498 (outside USA)

E: [proteintech@ptglab.com](mailto:proteintech@ptglab.com)  
W: [ptglab.com](http://ptglab.com)

**This product is exclusively available under Proteintech Group brand and is not available to purchase from any other manufacturer.**

---

## Données de validation sélectionnées



Immunofluorescent analysis of (4% PFA) fixed human breast cancer tissue using CoraLite®594 L2HGDH antibody (CL594-66269, Clone: 3D11C2) at dilution of 1:200.