

À des fins de recherche uniquement

Anticorps Monoclonal anti-GLUT1

Numéro de catalogue: **CL594-66290** **Phare**



Informations de base

Numéro de catalogue: CL594-66290	Numéro d'acquisition GenBank: BC121804	Méthode de purification: Purification par protéine G
Taille: 100ul, Concentration: 1000 µg/ml by Nanodrop;	Identification du gène (NCBI): 6513	CloneNo.: 2A5A2
Hôte: Mouse	Nom complet: solute carrier family 2 (facilitated glucose transporter), member 1	Dilutions recommandées: IF 1:50-1:500
Isotype: IgG1	MW calculé 492 aa, 54 kDa	Excitation/Emission maxima wavelengths: 588 nm / 604 nm
Immunogen Catalog Number: AG17108	MW observés: 45-55 kDa	

Applications

Applications testées: FC (Intra), IF	Contrôles positifs: IF : tissu de cancer du poumon humain,
Spécificité de l'espèce: Humain, souris	

Informations générales

GLUT1, also known as SLC2A1, is an ubiquitously expressed glucose transporter and responsible for the basal level of glucose uptake in most cell types. Human erythrocytes express the highest level of the GLUT1. Defects in SLC2A1 are the cause of GLUT1 deficiency syndrome type 1 and type 2. High expression of GLUT1 has been reported to be a reliable immunohistochemical marker for juvenile hemangiomas. GLUT1 protein may appear as two or more distinct forms among 43 kDa to 55 kDa due to the different glycosylation state. And the conversion of highly glycosylated form of GLUT1 to less glycosylated form has been reported to correlate to differentiation (PMID: 8263524, 23302780). 66290-1-Ig antibody can also detect the 130 kDa dimer protein in SDS-PAGE (PMID: 11681785).

Stockage

Stockage:
Stocker à -20 °C. Éviter toute exposition à la lumière. Stable pendant un an après l'expédition.
Tampon de stockage:
PBS avec glycérol à 50 %, Proclin300 à 0,05 % et BSA à 0,5 %, pH 7,3.
L'aliquotage n'est pas nécessaire pour le stockage à -20C

***** Les 20ul contiennent 0,1% de BSA.**

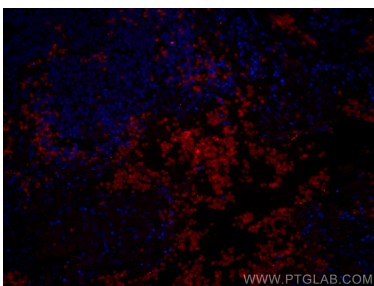
For technical support and original validation data for this product please contact:

T: 1 (888) 4PTGLAB (1-888-478-4522) (toll free in USA), or 1(312) 455-8498 (outside USA)

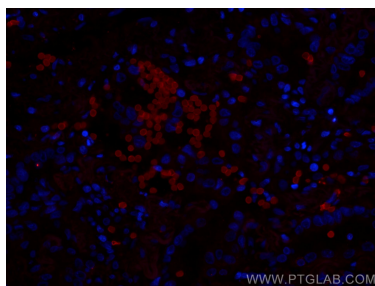
E: proteintech@ptglab.com
W: ptglab.com

This product is exclusively available under Proteintech Group brand and is not available to purchase from any other manufacturer.

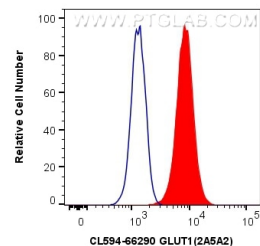
Données de validation sélectionnées



Immunofluorescent analysis of (4% PFA) fixed human lung cancer tissue using CoraLite@594 GLUT1 antibody (CL594-66290, Clone: 2A5A2) at dilution of 1:200.



Immunofluorescent analysis of (4% PFA) fixed human lung cancer tissue using CoraLite@594 GLUT1 antibody (CL594-66290, Clone: 2A5A2) at dilution of 1:200.



1X10⁶ Jurkat cells were intracellularly stained with 0.4 ug CoraLite@594 Anti-Human GLUT1 (CL594-66290, Clone:2A5A2) (red), or 0.4 ug Control Antibody. Cells were fixed with 4% PFA and permeabilized with Flow Cytometry Perm Buffer (PF00011-C).