

À des fins de recherche uniquement

Anticorps Monoclonal anti-Gamma Tubulin



Numéro de catalogue: **CL594-66320**

Informations de base

Numéro de catalogue: CL594-66320	Numéro d'acquisition GenBank: BC000619	Méthode de purification: Purification par protéine A
Taille: 100ul, Concentration: 1000 µg/ml by Nanodrop;	Identification du gène (NCBI): 7283	CloneNo.: 3F9H8
Hôte: Mouse	Nom complet: tubulin, gamma 1	Dilutions recommandées: IF 1:50-1:500
Isotype: IgG2a	MW calculé: 51 kDa	Excitation/Emission maxima wavelengths: 588 nm / 604 nm
Immunogen Catalog Number: AG23913	MW observés: 48-55 kDa	

Applications

Applications testées: FC (Intra), IF	Contrôles positifs: IF : cellules MDCK,
Spécificité de l'espèce: canin, Humain, rat, souris	

Informations générales

Gamma tubulin is a member of tubulin superfamily and is a key component required for microtubule nucleation and stabilization. It is concentrated at the pericentriolar material of centrosomes in interphase cells, predominantly on spindle poles in mitotic cells, while found in midbodies during cytokinesis. Overexpression of gamma tubulin has been found in various cancers including breast cancer and gliomas. This antibody can well label the centrosome structure.

Stockage

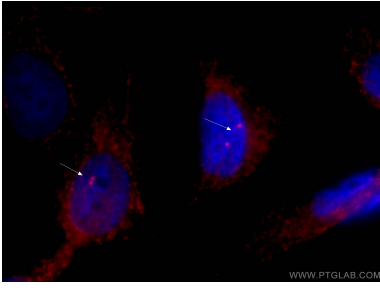
Stockage:
Stocker à -20 °C. Éviter toute exposition à la lumière. Stable pendant un an après l'expédition.
Tampon de stockage:
PBS avec glycérol à 50 %, Proclin300 à 0,05 % et BSA à 0,5 %, pH 7,3.
L'aliquotage n'est pas nécessaire pour le stockage à -20C

***** Les 20ul contiennent 0,1% de BSA.**

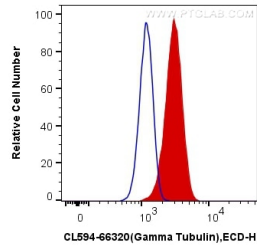
For technical support and original validation data for this product please contact:
T: 1 (888) 4PTGLAB (1-888-478-4522) (toll free in USA), or 1(312) 455-8498 (outside USA) E: proteintech@ptglab.com W: ptglab.com

This product is exclusively available under Proteintech Group brand and is not available to purchase from any other manufacturer.

Données de validation sélectionnées



Immunofluorescent analysis of (-20°C Ethanol) fixed MDCK cells using CL594-66320 (gamma tubulin antibody) at dilution of 1:50.



1X10⁶ HeLa cells were intracellularly stained with 0.8 ug CoraLite®594 Anti-Human Gamma Tubulin (CL594-66320, Clone:3F9H8) (red), or 0.8 ug Mouse IgG2a Isotype Control (CL594-66360-2, Clone: K11A1B2A2) (blue). Cells were fixed with 4% PFA and permeabilized with Flow Cytometry Perm Buffer (PF00011-C).