

À des fins de recherche uniquement

Anticorps Monoclonal anti-GP73/GOLPH2



Numéro de catalogue: **CL594-66331**

Informations de base

Numéro de catalogue: CL594-66331	Numéro d'acquisition GenBank: BC001740	Méthode de purification: Purification par protéine G
Taille: 100ul , Concentration: 1000 µg/ml by Nanodrop;	Identification du gène (NCBI): 51280	CloneNo.: 3D1F1
Hôte: Mouse	Nom complet: golgi membrane protein 1	Dilutions recommandées: IF 1:50-1:500
Isotype: IgG1	MW calculé 45 kDa	Excitation/Emission maxima wavelengths: 588 nm / 604 nm
Immunogen Catalog Number: AG7207		

Applications

Applications testées: FC (Intra), IF	Contrôles positifs: IF : cellules HepG2, cellules HeLa
Spécificité de l'espèce: Humain	

Informations générales

Golgi phosphoprotein 2 (GOLPH2, also known as GP73 or GOLM1) is a resident Golgi type-II membrane protein. It is predominantly expressed in the epithelial cells of many human tissues. GOLPH2 traffics through endosomes and can be secreted into the circulation. Its expression is upregulated in a number of tumors and GOLPH2 could be a promising serum marker for hepatocellular carcinoma. We got 73 kDa in western blotting due to phosphorylation.

Stockage

Stockage:
Stocker à -20 °C. Éviter toute exposition à la lumière. Stable pendant un an après l'expédition.
Tampon de stockage:
PBS avec glycérol à 50 %, Proclin300 à 0,05 % et BSA à 0,5 %, pH 7,3.
L'aliquotage n'est pas nécessaire pour le stockage à -20C

***** Les 20ul contiennent 0,1% de BSA.**

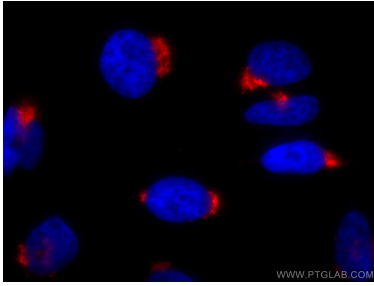
For technical support and original validation data for this product please contact:

T: 1 (888) 4PTGLAB (1-888-478-4522) (toll free
in USA), or 1(312) 455-8498 (outside USA)

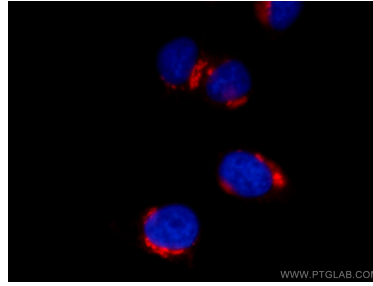
E: proteintech@ptglab.com
W: ptglab.com

This product is exclusively available under Proteintech Group brand and is not available to purchase from any other manufacturer.

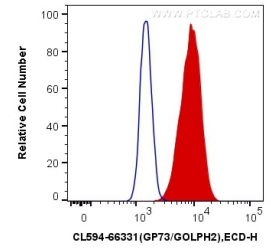
Données de validation sélectionnées



Immunofluorescent analysis of (4% PFA) fixed HeLa cells using CoraLite®594 GP73/GOLPH2 antibody (CL594-66331, Clone: 3D1F1) at dilution of 1:200.



Immunofluorescent analysis of (4% PFA) fixed HepG2 cells using CL594-66331 (GP73/GOLPH2 antibody) at dilution of 1:100.



1X10⁶ HeLa cells were intracellularly stained with 0.4 ug CoraLite®594 Anti-Human GP73/GOLPH2 (CL594-66331, Clone:3D1F1) (red), or 0.4 ug Mouse IgG1 Isotype Control (CL594-66360, Clone: T1F8D3F10) (blue). Cells were fixed with 4% PFA and permeabilized with Flow Cytometry Perm Buffer (PF00011-C).