

À des fins de recherche uniquement

Anticorps Monoclonal anti-Annexin A1



Numéro de catalogue: **CL594-66344**

Informations de base

Numéro de catalogue: CL594-66344	Numéro d'acquisition GenBank: BC001275	Méthode de purification: Purification par protéine G
Taille: 100ul , Concentration: 1000 µg/ml by Nanodrop;	Identification du gène (NCBI): 301	CloneNo.: 1E1B7
Hôte: Mouse	Nom complet: annexin A1	Dilutions recommandées: IF 1:50-1:500
Isotype: IgG1	MW calculé 346 aa, 39 kDa	Excitation/Emission maxima wavelengths: 588 nm / 604 nm
Immunogen Catalog Number: AG17273	MW observés: 35 kDa	

Applications

Applications testées: FC (Intra), IF	Contrôles positifs: IF : cellules A549,
Spécificité de l'espèce: Humain, souris	

Informations générales

ANXA1, also named as ANX1, LPC1 and p35, belongs to the annexin family. It is a member of the annexin family of Ca²⁺-binding and phospholipidbinding proteins, and it is particularly abundant in various populations of peripheral blood leukocytes. ANXA1 regulates phospholipase A2 activity. It seems to bind from two to four calcium ions with high affinity. ANXA1 is a pleiotrophic protein produced by many cell types including peripheral blood leucocytes.

Stockage

Stockage:
Stocker à -20 °C. Éviter toute exposition à la lumière. Stable pendant un an après l'expédition.
Tampon de stockage:
PBS avec glycérol à 50 %, Proclin300 à 0,05 % et BSA à 0,5 %, pH 7,3.
L'aliquotage n'est pas nécessaire pour le stockage à -20C

***** Les 20ul contiennent 0,1% de BSA.**

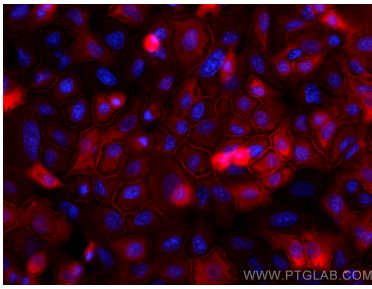
For technical support and original validation data for this product please contact:

T: 1 (888) 4PTGLAB (1-888-478-4522) (toll free
in USA), or 1(312) 455-8498 (outside USA)

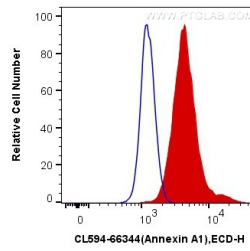
E: proteintech@ptglab.com
W: ptglab.com

This product is exclusively available under Proteintech Group brand and is not available to purchase from any other manufacturer.

Données de validation sélectionnées



Immunofluorescent analysis of (-20°C Methanol) fixed A549 cells using CoraLite®594 Annexin A1 antibody (CL594-66344, Clone: 1E1B7) at dilution of 1:200.



1X10⁶ K-562 cells were intracellularly stained with 0.4 ug CoraLite®594 Anti-Human Annexin A1 (CL594-66344, Clone:1E1B7) (red), or 0.4 ug Mouse IgG1 Isotype Control (CL594-66360, Clone: T1F8D3F10) (blue). Cells were fixed with 4% PFA and permeabilized with Flow Cytometry Perm Buffer (PF00011-C).