

À des fins de recherche uniquement

# Anticorps Monoclonal anti-CAPRIN 1

Numéro de catalogue: CL594-66352



## Informations de base

Numéro de catalogue: CL594-66352	Numéro d'acquisition GenBank: BC001731	Méthode de purification: Purification par protéine G
Taille: 100ul , Concentration: 1000 µg/ml by Nanodrop;	Identification du gène (NCBI): 4076	CloneNo.: 6B10F11
Hôte: Mouse	Nom complet: cell cycle associated protein 1	Dilutions recommandées: IF 1:400-1:1600
Isotype: IgG1	MW calculé 78 kDa	Excitation/Emission maxima wavelengths: 588 nm / 604 nm
Immunogen Catalog Number: AG7413	MW observés: 116 kDa	

## Applications

Applications testées: FC (Intra), IF	Contrôles positifs: IF : cellules HeLa,
Spécificité de l'espèce: Humain, rat, souris	

## Informations générales

CAPRIN1(Caprin-1) is a cytoplasmic phosphoprotein which may regulate the transport and translation of mRNAs of proteins involved in synaptic plasticity in neurons and cell proliferation and migration in multiple cell types. Its levels, except in the brain, are tightly correlated with cellular proliferation. Suppression of expression of human Caprin-1 resulted in slowing of the proliferation rate, which suggests its essential for normal cellular proliferation.

## Stockage

**Stockage:**  
Stocker à -20 °C. Éviter toute exposition à la lumière. Stable pendant un an après l'expédition.  
**Tampon de stockage:**  
PBS avec glycérol à 50 %, Proclin300 à 0,05 % et BSA à 0,5 %, pH 7,3.  
L'aliquotage n'est pas nécessaire pour le stockage à -20C

**\*\*\* Les 20ul contiennent 0,1% de BSA.**

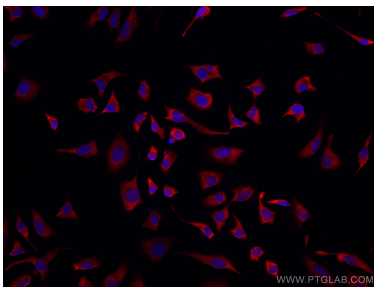
For technical support and original validation data for this product please contact:

T: 1 (888) 4PTGLAB (1-888-478-4522) (toll free  
in USA), or 1(312) 455-8498 (outside USA)

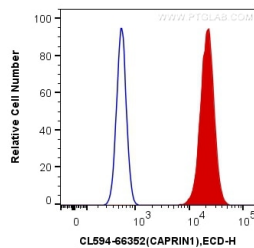
E: [proteintech@ptglab.com](mailto:proteintech@ptglab.com)  
W: [ptglab.com](http://ptglab.com)

**This product is exclusively available under Proteintech Group brand and is not available to purchase from any other manufacturer.**

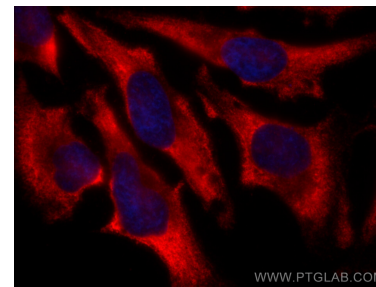
## Données de validation sélectionnées



Immunofluorescent analysis of (-20°C Ethanol) fixed HeLa cells using CoraLite®594-conjugated CAPRIN1 antibody (CL594-66352, Clone: 6B10F11) at dilution of 1:100.



1X10<sup>6</sup> NIH/3T3 cells were intracellularly stained with 0.4 ug CoraLite®594 Anti-Human CAPRIN1 (CL594-66352, Clone:6B10F11) (red), or 0.4 ug Mouse IgG1 Isotype Control (CL594-66360, Clone: T1F8D3F10) (blue). Cells were fixed with 4% PFA and permeabilized with Flow Cytometry Perm Buffer (PF00011-C).



Immunofluorescent analysis of (-20°C Ethanol) fixed HeLa cells using CoraLite®594 CAPRIN1 antibody (CL594-66352, Clone: 6B10F11) at dilution of 1:800.