

À des fins de recherche uniquement

Anticorps Monoclonal anti-PGRMC1

Numéro de catalogue: **CL594-66372** **Phare**



Informations de base

Numéro de catalogue: CL594-66372	Numéro d'acquisition GenBank: BC034238	Méthode de purification: Purification par protéine G
Taille: 100ul , Concentration: 1000 µg/ml by Nanodrop;	Identification du gène (NCBI): 10857	CloneNo.: 1C10D11
Hôte: Mouse	Nom complet: progesterone receptor membrane component 1	Dilutions recommandées: IF 1:50-1:500
Isotype: IgG1	MW calculé 195 aa, 22 kDa	Excitation/Emission maxima wavelengths: 588 nm / 604 nm
Immunogen Catalog Number: AG3643	MW observés: 25-27 kDa	

Applications

Applications testées: IF	Contrôles positifs: IF : tissu de tumeur ovarienne humain,
Spécificité de l'espèce: Humain, porc, rat, souris	

Informations générales

Progesterone receptor membrane component 1 (PGRMC1) is a member of a multi-protein progesterone-binding complex. However, PGRMC1 shares homology with cytochrome b5-related proteins rather than hormone receptors (PMID: 18992768). It is a heme binding protein with binding sites for Src homology (SH2) and SH3 domain-containing proteins (PMID: 17583495). PGRMC1 is overexpressed in a variety of cancers, and thus represents an important biomarker for cancer progression and a potential target for anticancer drugs (PMID: 21730960). In nonmalignant tissues, PGRMC1 is highly expressed in the liver and kidney (PMID: 9705155; 20164297).

Stockage

Stockage:
Stocker à -20 °C. Éviter toute exposition à la lumière.
Tampon de stockage:
PBS avec glycérol à 50 %, Proclin300 à 0,05 % et BSA à 0,5 %, pH 7,3.
L'aliquotage n'est pas nécessaire pour le stockage à -20C

***** Les 20ul contiennent 0,1% de BSA.**

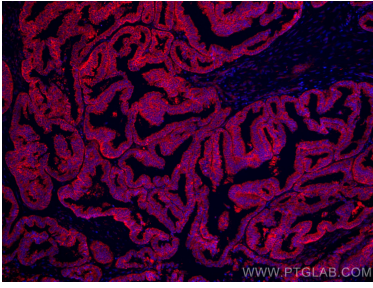
For technical support and original validation data for this product please contact:

T: 1 (888) 4PTGLAB (1-888-478-4522) (toll free in USA), or 1(312) 455-8498 (outside USA)

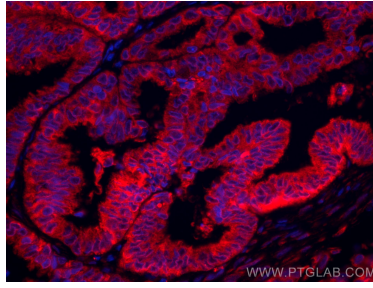
E: proteintech@ptglab.com
W: ptglab.com

This product is exclusively available under Proteintech Group brand and is not available to purchase from any other manufacturer.

Données de validation sélectionnées



Immunofluorescent analysis of (4% PFA) fixed human ovary tumor tissue using CoraLite@594 PGRMC1 antibody (CL594-66372, Clone: 1C10D11) at dilution of 1:200.



Immunofluorescent analysis of (4% PFA) fixed human ovary tumor tissue using CoraLite@594 PGRMC1 antibody (CL594-66372, Clone: 1C10D11) at dilution of 1:200.