

À des fins de recherche uniquement

Anticorps Monoclonal anti-TUBB3-specific



Numéro de catalogue: **CL594-66375**

2 Publications

Informations de base

Numéro de catalogue: CL594-66375	Numéro d'acquisition GenBank: NM_001197181	Méthode de purification: Purification par protéine G
Taille: 100ul , Concentration: 1000 µg/ml by Nanodrop;	Identification du gène (NCBI): 10381	CloneNo.: 1F8G10
Hôte: Mouse	Nom complet: tubulin, beta 3	Dilutions recommandées: WB 1:1000-1:6000 IF 1:50-1:500
Isotype: IgG1	MW calculé: 55 kDa	Excitation/Emission maxima wavelengths: 588 nm / 604 nm

Applications

Applications testées: FC (Intra), IF, WB	Contrôles positifs: WB : cellules Neuro-2a, IF : tissu cérébral de souris,
Demandes citées: IF, IHC	
Spécificité de l'espèce: Humain, rat, souris	
Espèces citées: souris	

Informations générales

TUBB3, the class III β tubulin or Tuj1, is selectively expressed in testis and neurons of the central and peripheral nervous system. It has been widely used as a marker for neurons. Aberrant expression of TUBB3 has also been found in various tumors of non-neural origin and can be used as a biomarker for cancer aggressiveness and a marker for the tendency to respond poorly to chemotherapy. This antibody is specific to TUBB3 but not cross-react with other tubulin isoforms. And the antibody is conjugated with CL594, Ex/Em 593 nm/614 nm.

Publications notables

Autrice	Pubmed ID	Journal	Application
Nao Iguchi	35332157	Sci Rep	IF
Yuki Shindo	35427599	Exp Cell Res	IHC

Stockage

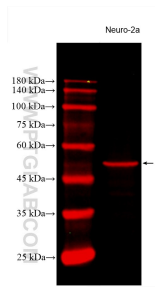
Stockage:
Stocker à -20 °C. Éviter toute exposition à la lumière. Stable pendant un an après l'expédition.
Tampon de stockage:
PBS avec glycérol à 50 %, Proclin300 à 0,05 % et BSA à 0,5 %, pH 7,3.
L'aliquotage n'est pas nécessaire pour le stockage à -20C

***** Les 20ul contiennent 0,1% de BSA.**

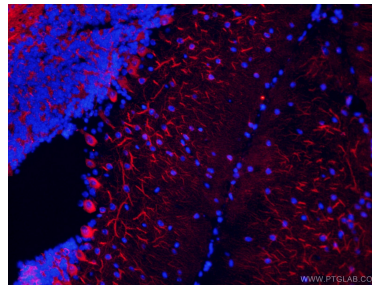
For technical support and original validation data for this product please contact:
T: 1 (888) 4PTGLAB (1-888-478-4522) (toll free in USA), or 1(312) 455-8498 (outside USA)
E: proteintech@ptglab.com
W: ptglab.com

This product is exclusively available under Proteintech Group brand and is not available to purchase from any other manufacturer.

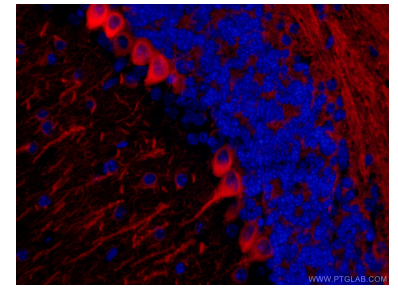
Données de validation sélectionnées



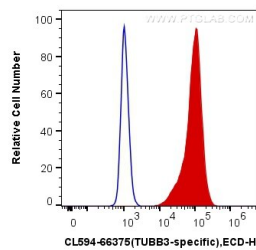
Neuro-2a lysates were subjected to SDS PAGE followed by western blot with CL594-66375 (TUBB3-specific antibody) at dilution of 1:3000 incubated at room temperature for 1.5 hours.



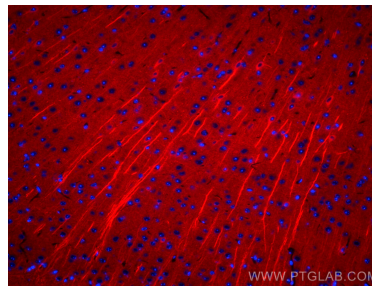
Immunofluorescent analysis of (4% PFA) fixed mouse brain tissue using CL594-66375 (TUBB3-specific antibody) at dilution of 1:50.



Immunofluorescent analysis of (4% PFA) fixed mouse brain tissue using CL594-66375 (TUBB3-specific antibody) at dilution of 1:50.



1X10⁶ SH-SY5Y cells were intracellularly stained with 0.4 ug Coralite®594 Anti-Human TUBB3-specific (CL594-66375, Clone:1F8G10) (red), or 0.4 ug Mouse IgG1 Isotype Control (CL594-66360, Clone: T1F8D3F10) (blue). Cells were fixed with 4% PFA and permeabilized with Flow Cytometry Perm Buffer (PF00011-C).



Immunofluorescent analysis of (4% PFA) fixed mouse brain tissue using Coralite®594 TUBB3-specific antibody (CL594-66375, Clone: 1F8G10) at dilution of 1:200.