

À des fins de recherche uniquement

# Anticorps Monoclonal anti-TRAF6

Numéro de catalogue: CL594-66498



## Informations de base

|   |  |   |
|---|--|---|
| Numéro de catalogue:<br>CL594-66498                         | Numéro d'acquisition GenBank:<br>BC031052        | Méthode de purification:<br>Purification par protéine G       |
| Taille:<br>100ul, Concentration: 1000 µg/ml by<br>Nanodrop; | Identification du gène (NCBI):<br>7189           | CloneNo.:<br>1D1E1  |
| Hôte:<br>Mouse  | Nom complet:<br>TNF receptor-associated factor 6 | Dilutions recommandées:<br>IF 1:50-1:500                      |
| Isotype:<br>IgG1  | MW calculé<br>522 aa, 60 kDa                     | Excitation/Emission maxima<br>wavelengths:<br>588 nm / 604 nm |
| Immunogen Catalog Number:<br>AG24696                        |  |   |

## Applications

|  |  |
|--|--|
| Applications testées:<br>FC (Intra), IF    | Contrôles positifs:<br>IF : cellules HeLa, |
| Spécificité de l'espèce:<br>Humain, souris |  |

## Informations générales

TRAF6 is a member of the TNF receptor associated factor (TRAF) protein family. TRAF6 is recognized as a signal transducer, which activates the NF-κB pathway in response to pro-inflammatory cytokines. TRAF6 has E3 ligase activity and is responsible for inducing Lys-63 (K63)-linked poly-ubiquitination chains, functioning together with E2 Ubc13/Uev1A complex to mediate IKK activation. TRAF6 plays a crucial role in the regulation of the innate and adaptive immune responses.

## Stockage

**Stockage:**  
Stocker à -20 °C. Éviter toute exposition à la lumière. Stable pendant un an après l'expédition.  
**Tampon de stockage:**  
PBS avec glycérol à 50 %, Proclin300 à 0,05 % et BSA à 0,5 %, pH 7,3.  
L'aliquotage n'est pas nécessaire pour le stockage à -20C

**\*\*\* Les 20ul contiennent 0,1% de BSA.**

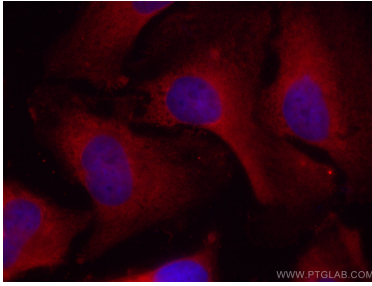
For technical support and original validation data for this product please contact:

T: 1 (888) 4PTGLAB (1-888-478-4522) (toll free  
in USA), or 1(312) 455-8498 (outside USA)

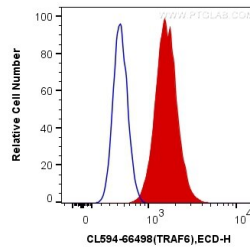
E: [proteintech@ptglab.com](mailto:proteintech@ptglab.com)  
W: [ptglab.com](http://ptglab.com)

**This product is exclusively available under Proteintech Group brand and is not available to purchase from any other manufacturer.**

## Données de validation sélectionnées



Immunofluorescent analysis of (-20°C Ethanol) fixed HeLa cells using CoraLite®594-conjugated TRAF6 antibody (CL594-66498, Clone: 1D1E1 ) at dilution of 1:100.



1X10<sup>6</sup> Jurkat cells were intracellularly stained with 0.4 ug CoraLite®594 Anti-Human TRAF6 (CL594-66498, Clone:1D1E1) (red), or 0.4 ug Mouse IgG1 Isotype Control (CL594-66360, Clone: T1F8D3F10) (blue). Cells were fixed with 4% PFA and permeabilized with Flow Cytometry Perm Buffer (PF00011-C).