

À des fins de recherche uniquement

# Anticorps Monoclonal anti-HLA-E

Numéro de catalogue: CL594-66530



## Informations de base

Numéro de catalogue: CL594-66530	Numéro d'acquisition GenBank: BC002578	Méthode de purification: Purification par protéine A
Taille: 100ul , Concentration: 1000 µg/ml by Nanodrop;	Identification du gène (NCBI): 3133	CloneNo.: 1A4G3
Hôte: Mouse	Nom complet: major histocompatibility complex, class I, E	Dilutions recommandées: IF 1:50-1:500
Isotype: IgG2a	MW calculé 40 kDa	Excitation/Emission maxima wavelengths: 588 nm / 604 nm
Immunogen Catalog Number: AG6724		

## Applications

Applications testées: IF	Contrôles positifs: IF : tissu d'amygdalite humain,
Spécificité de l'espèce: Humain	

## Informations générales

Human major histocompatibility complex (MHC) antigens, also referred to as human leukocyte antigens (HLA), are encoded by genes located on the short arm of chromosome 6 (6p21.3). There are two classes of HLA antigens: class I and class II. This class I molecules are membrane glycoproteins composed of a heavy (alpha) chain which is encoded by a HLA class I gene, and  $\beta$ 2-microglobulin light (beta) chain. The most extensively characterized members of the HLA class I gene family are the genes encoding the major transplantation antigens, HLA-A, B and C. HLA-E is a non-classical MHC class I molecule. HLA-E is frequently overexpressed in tumor diseases, transplants and virus-infected cells and represents an immunomodulatory molecule by binding to the receptors CD94/NKG2A, -B and -C on NK and T cells. Due to its immune suppressive features HLA-E expression might represent an important mechanism of tumors to escape immune surveillance.(PMID: 667938; 3375250; 2249951; 27589686)

## Stockage

Stockage:  
Stocker à -20 °C. Éviter toute exposition à la lumière. Stable pendant un an après l'expédition.  
Tampon de stockage:  
PBS avec glycérol à 50 %, Proclin300 à 0,05 % et BSA à 0,5 %, pH 7,3.  
L'aliquotage n'est pas nécessaire pour le stockage à -20C

**\*\*\* Les 20ul contiennent 0,1% de BSA.**

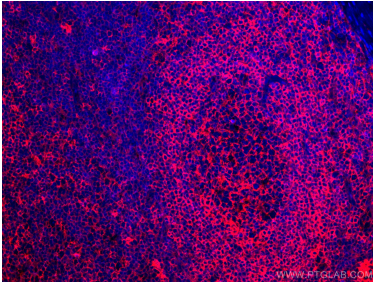
For technical support and original validation data for this product please contact:

T: 1 (888) 4PTGLAB (1-888-478-4522) (toll free  
in USA), or 1(312) 455-8498 (outside USA)

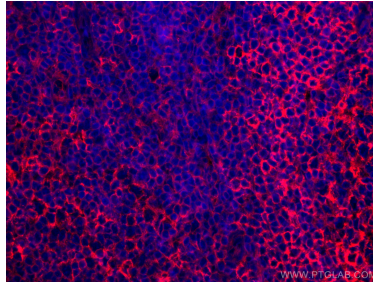
E: [proteintech@ptglab.com](mailto:proteintech@ptglab.com)  
W: [ptglab.com](http://ptglab.com)

**This product is exclusively available under Proteintech Group brand and is not available to purchase from any other manufacturer.**

## Données de validation sélectionnées



Immunofluorescent analysis of (4% PFA) fixed human tonsillitis tissue using the CoraLite® 594-conjugated version of this antibody, CL594-66530 (HLA-E antibody), at dilution of 1:100.



Immunofluorescent analysis of (4% PFA) fixed human tonsillitis tissue using the CoraLite® 594-conjugated version of this antibody, CL594-66530 (HLA-E antibody), at dilution of 1:100.