

À des fins de recherche uniquement

Anticorps Monoclonal anti-TLR5

Numéro de catalogue: CL594-66570



Informations de base

Numéro de catalogue: CL594-66570	Numéro d'acquisition GenBank: BC109119	Méthode de purification: Purification par protéine G
Taille: 100ul, Concentration: 1000 µg/ml by Nanodrop;	Identification du gène (NCBI): 7100	CloneNo.: 4B3D2
Hôte: Mouse	Nom complet: toll-like receptor 5	Excitation/Emission maxima wavelengths: 594 nm / 615 nm
Isotype: IgG1	MW calculé: 858 aa, 98 kDa	
Immunogen Catalog Number: AG13840	MW observés: 100 kDa	

Applications

Applications testées:
FC (Intra)

Spécificité de l'espèce:
Humain, porc, rat, souris

Informations générales

TLR5 belongs to the Toll-like receptor family which are important in the innate immune response to pathogens. TLRs are highly conserved from Drosophila to humans and share structural and functional similarities. TLR5 is known to recognize bacterial flagellin from invading mobile bacteria. TLR5 acts via MYD88 and TRAF6, leading to NF-kappa-B activation, cytokine secretion and the inflammatory response. Mutations in TLR5 gene have been associated with both resistance and susceptibility to systemic lupus erythematosus, and susceptibility to Legionnaire disease.

Stockage

Stockage:
Stocker à -20 °C. Éviter toute exposition à la lumière. Stable pendant un an après l'expédition.

Tampon de stockage:
PBS avec glycérol à 50 %, Proclin300 à 0,05 % et BSA à 0,5 %, pH 7,3.
L'aliquotage n'est pas nécessaire pour le stockage à -20C

***** Les 20ul contiennent 0,1% de BSA.**

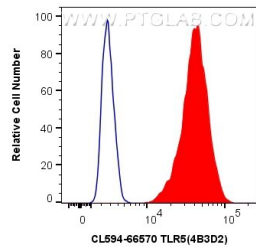
For technical support and original validation data for this product please contact:

T: 1 (888) 4PTGLAB (1-888-478-4522) (toll free
in USA), or 1(312) 455-8498 (outside USA)

E: proteintech@ptglab.com
W: ptglab.com

This product is exclusively available under Proteintech Group brand and is not available to purchase from any other manufacturer.

Données de validation sélectionnées



1X10⁶ THP-1 cells were intracellularly stained with 0.8 ug CoraLite® Plus 594 Anti-Human TLR5 (CL594-66570, Clone:4B3D2) (red), or 0.8 ug CoraLite®594 Mouse IgG1 Isotype Control (MOPC-21) (CL594-65124, Clone: MOPC-21) (blue). Cells were fixed with 4% PFA and permeabilized with Flow Cytometry Perm Buffer (PF00011-C).