

À des fins de recherche uniquement

Anticorps Monoclonal anti-PSMA/GCPII



Numéro de catalogue: CL594-66678

Informations de base

Numéro de catalogue: CL594-66678	Numéro d'acquisition GenBank: BC025672	Méthode de purification: Purification par protéine G
Taille: 100ul , Concentration: 1000 µg/ml by Nanodrop;	Identification du gène (NCBI): 2346	CloneNo.: 3G4E12
Hôte: Mouse	Nom complet: folate hydrolase (prostate-specific membrane antigen) 1	Dilutions recommandées: IF 1:50-1:500
Isotype: IgG1	MW calculé 719 aa, 81 kDa	Excitation/Emission maxima wavelengths: 588 nm / 604 nm
Immunogen Catalog Number: AG16594	MW observés: 100-120 kDa	

Applications

Applications testées:
FC (Intra), IF
Spécificité de l'espèce:
Humain, rat

Contrôles positifs:
IF : tissu de cancer de la prostate humain,

Informations générales

PSMA (Prostate-specific membrane antigen) is also named as FOLH1, FOLH, NAALAD1, PSM and belongs to the peptidase M28 family. PSMA is a 100-120 kDa integral transmembrane glycoprotein, considered to be a highly specific marker of the prostate gland, and has successfully been used as a marker of circulating prostatic epithelial cells (PMID:10074909; 15680901). It is involved in conversion of the major neurotransmitter (NAAG) to NAA and free glutamate. It has 8 isoforms produced by alternative splicing.

Stockage

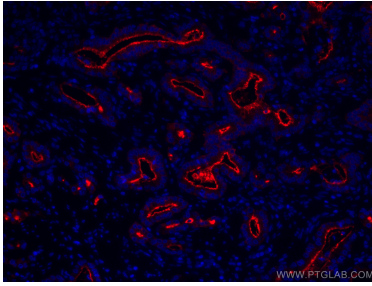
Stockage:
Stocker à -20 °C. Éviter toute exposition à la lumière. Stable pendant un an après l'expédition.
Tampon de stockage:
PBS avec glycérol à 50 %, Proclin300 à 0,05 % et BSA à 0,5 %, pH 7,3.
L'aliquotage n'est pas nécessaire pour le stockage à -20C

***** Les 20ul contiennent 0,1% de BSA.**

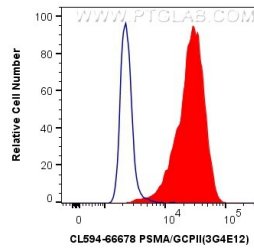
For technical support and original validation data for this product please contact:
T: 1 (888) 4PTGLAB (1-888-478-4522) (toll free in USA), or 1(312) 455-8498 (outside USA)
E: proteintech@ptglab.com
W: ptglab.com

This product is exclusively available under Proteintech Group brand and is not available to purchase from any other manufacturer.

Données de validation sélectionnées



Immunofluorescent analysis of (4% PFA) fixed human prostate cancer tissue using CoraLite®594 PSMA/GCPII antibody (CL594-66678, Clone: 3G4E12) at dilution of 1:200.



1X10⁶ LNCaP cells were intracellularly stained with 0.4 ug CoraLite®594 Anti-Human PSMA/GCPII (CL594-66678, Clone:3G4E12) (red), or 0.4 ug Control Antibody. Cells were fixed with 4% PFA and permeabilized with Flow Cytometry Perm Buffer (PF00011-C).